

# WHY IS IT SO HARD TO ANSWER THE QUESTION

“in how many villages does the MRC/Wits Agincourt Unit work?”

It's a question of history **and** exactly what we study – **TRANSITIONS** and **CHANGE**

Changes in village leadership – and this will still keep happening!

Croquet Lawn B became its own village when it split from Agincourt in 2002  
Ireagh C leadership merged with Kildare B leadership in 2005

Villages are kept in the data base for research purposes differently from the way they are defined administratively and politically

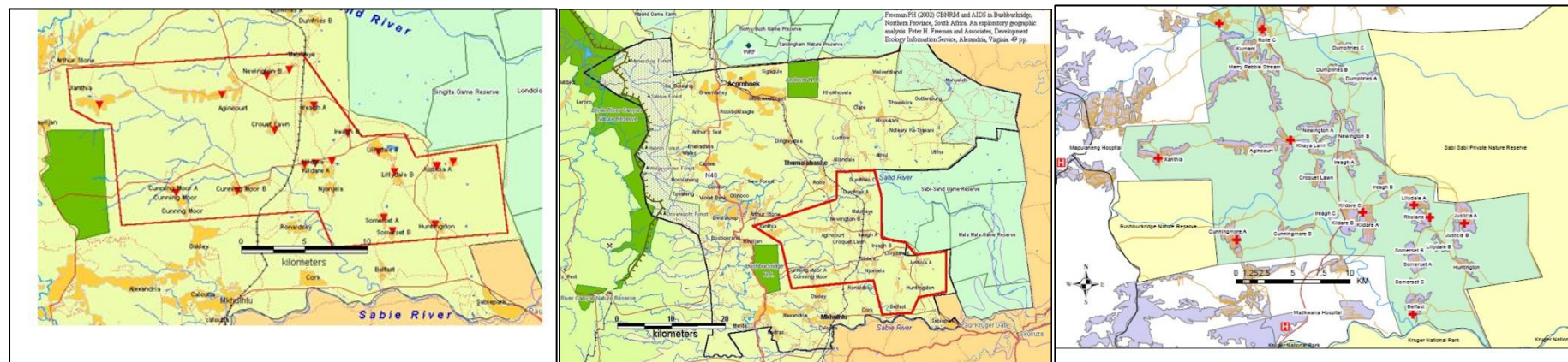
Somerset B, Kildare C, Rholane and Justica B are separate villages in the database since they were so different when the site started in 1992

The government builds new villages within the study site

In 1999, the first RDP village in the site, Khaya Lami was built  
In 2007, Ireagh C and Somerset C were built

The unit increases the size of the study site

So here is your complicated answer – it depends on which year you are talking about and if you are talking about the research villages in the database or the political villages



1992

2007

2012

The unit added Belfast, Dumphries A, B and C in 2007  
MP Stream, Makaringe, Rolle C and Kumani were added in 2012

	1992	1999	2004	2007	2012	2015 to current
<b>Number of research villages</b>	20	21	21	27	31	31
<b>Number of political villages</b>	16	17	18	24	28	28