

# MRC/WITS-AGINCOURT UNIT STUDY AREA HDSS FACT SHEET

## Makaringe

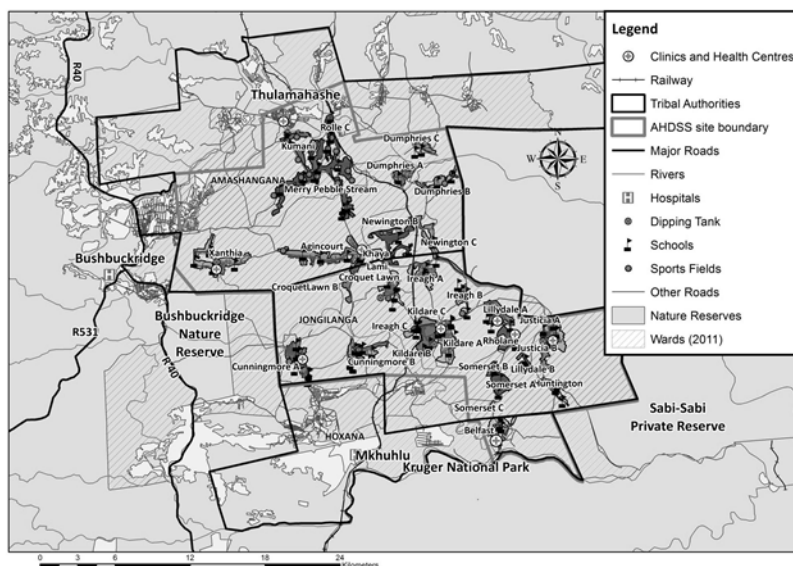
### Introduction

This “Fact Sheet” provides basic information on the population and demographics for the Agincourt HDSS study area using data from the 2018 and 2019 annual updates across all villages in the study area. Whenever you use this information, please reference it as being obtained from MRC/Wits Rural Public Health and Health Transitions Research Unit (Agincourt).

*Villages in the Agincourt Health and Socio-Demographic Surveillance (HDSS) System study area in 2018/2019 include:*

Agincourt, Belfast, Croquet Lawn, Croquet Lawn B, Cunningmore A, Cunningmore B, Dumphries A, Dumphries B, Dumphries C, Huntington, Ireagh A, Ireagh B, Ireagh C, Justicia, Khaya Lami, Kildare A, Kildare B, Kumani, Lillydale A, Lillydale B, Makaringe, MP Stream, Newington B, Newington C, Rolle C, Somerset, Somerset C, and Xanthia.

Where is Makaringe village in the MRC/Wits-Agincourt Unit Health and socio-Demographic System (HDSS) study area?



## Makaringe village population 2019

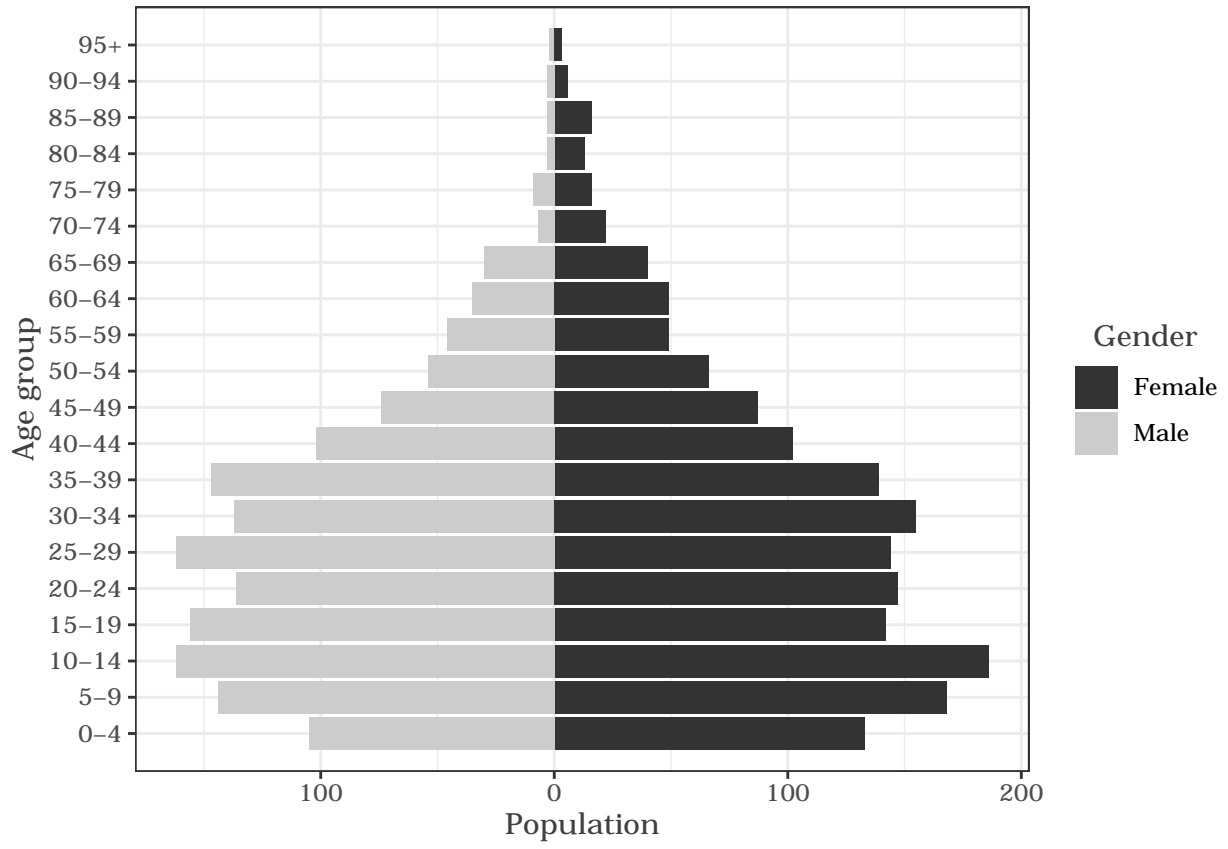
The numbers shown below are calculated according to numbers for the end of June 2019. The numbers are known as mid-year population figures.

Category	Total
Households	625
Population	3200
Male	1517
Female	1683
Children under 5	238
Children of school-going age (5-19)	958

Below you can see how many people were living in Makaringe of different ages in June 2019.

Age group	Male	Female	Total
0-4	105	133	238
5-9	144	168	312
10-14	162	186	348
15-19	156	142	298
20-24	136	147	283
25-29	162	144	306
30-34	137	155	292
35-39	147	139	286
40-44	102	102	204
45-49	74	87	161
50-54	54	66	120
55-59	46	49	95
60-64	35	49	84
65-69	30	40	70
70-74	7	22	29
75-79	9	16	25
80-84	3	13	16
85-89	3	16	19
90-94	3	6	9
95+	2	3	5

Below you can see the population structure of Makaringe for 2019.



# *Births*

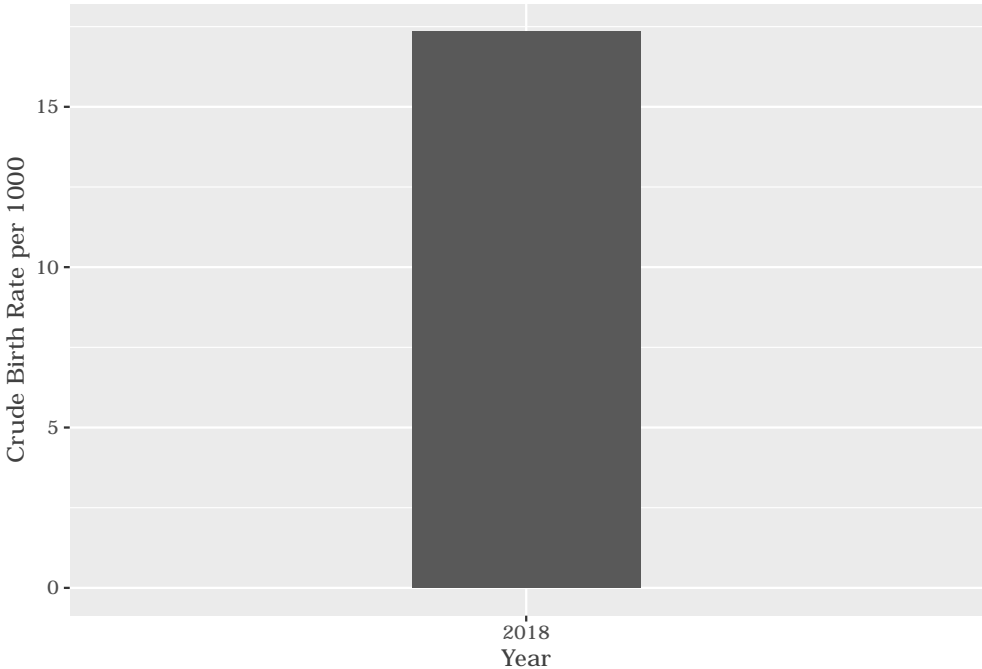
## Number of Births by Sex

The number of births recorded in Makaringe are shown below. We can only provide data to the end of 2018.

Category	Count
Male Births	24
Female Births	31
Total Births	55

## Crude Birth Rate (how many babies born for every one thousand people)

The graph below shows the crude birth rates in Makaringe in 2018.



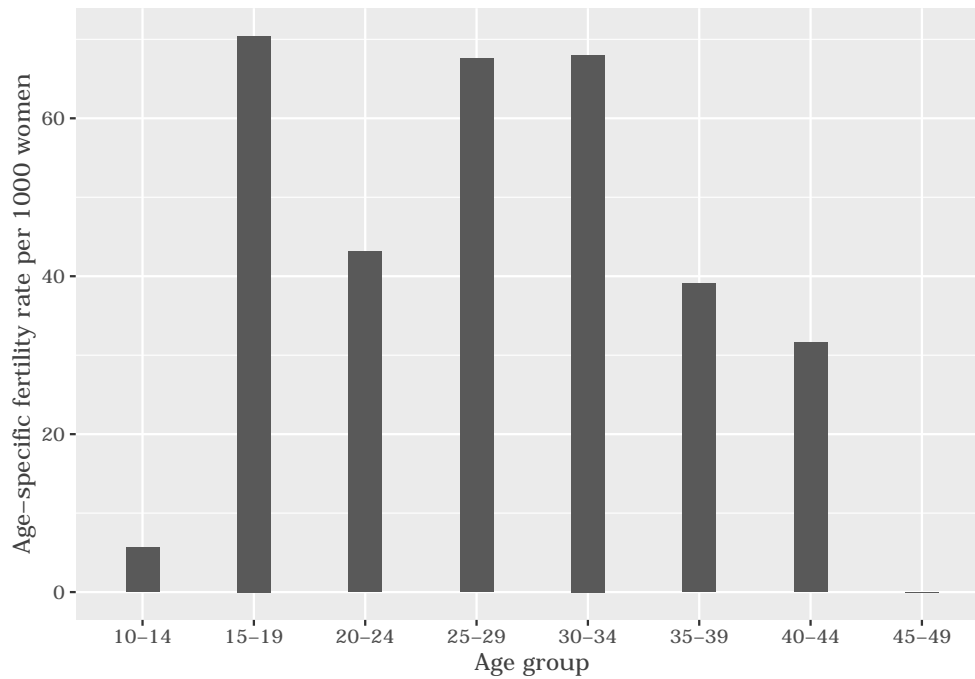
The crude birth rate is found by comparing the number of babies born to the total population. For every 1 000 people (all ages and both male and female) living in Makaringe in the year of 2018, 17 babies were born.

## Births by Mother's Age and Age Specific Fertility Rates

Research within the MRC/Wits-Agincourt Unit HDSS study area continues to look closely at fertility. You can see the number of babies born to mothers of different ages in the study area in 2018 below.

AgeGroup	ASFR
10-14	5
15-19	70
20-24	43
25-29	67
30-34	68
35-39	39
40-44	31
45-49	0

The age specific fertility rates of Makaringe in 2018 are shown below.



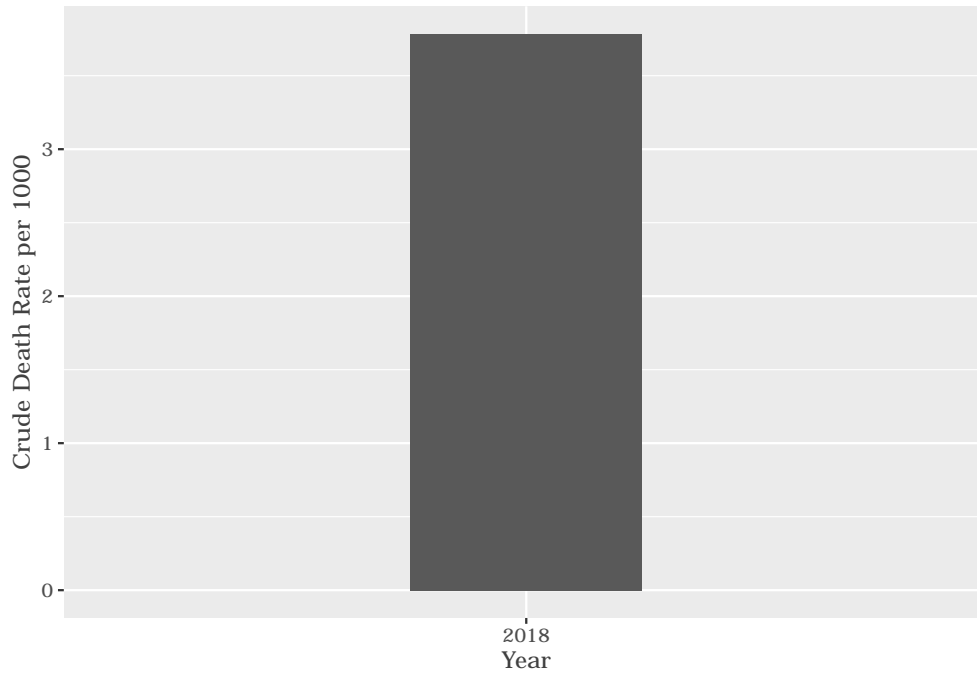
We find the age specific fertility rate by looking at how many women in a certain age group have had babies in a certain year. For example, we can see that in 2018, for the women in the age group 15-19, 70 out of every 1000 gave birth (if there had been over 1000 living in Makaringe).

## Deaths

Below you can see the total number of deaths that occurred in the Makaringe in 2018.

Category	Count
Male Deaths	8
Female Deaths	4
Total Deaths	12

Below you can see the total number of death that occurred in the Makaringe in 2018.



The crude death rate is found by looking at how many people died for every 1 000 people living in the population. In 2018, for every 1 000 people in the population of Makaringe, 3 died.

## *Migration*

### **Permanent migration patterns**

Below you can see how many people have moved into and out of Makaringe permanently for the year of 2018.

Category	Count
Male In-Migration	5
Female In-Migration	20
Total In-Migration	25

Category	Count
Male Out-Migration	16
Female Out-Migration	34
Total Out-Migration	50