

MRC/WITS-AGINCOURT UNIT STUDY AREA HDSS FACT SHEET

Lillydale A

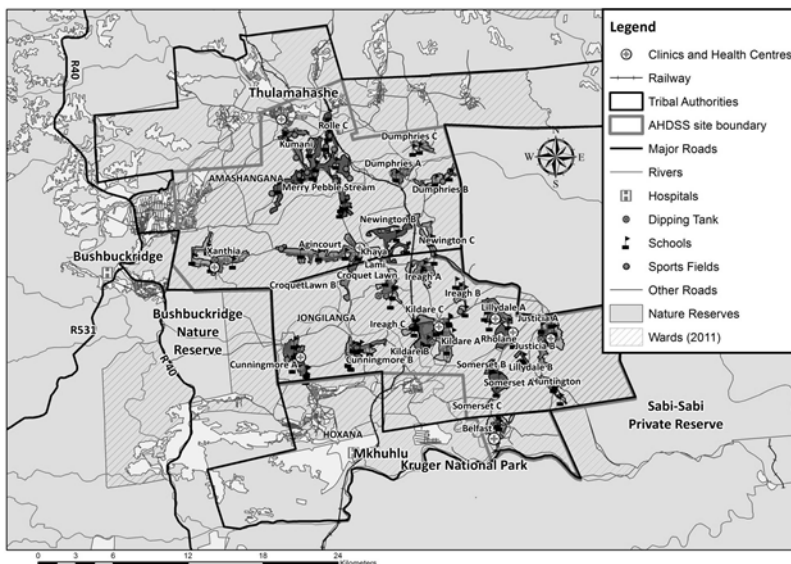
Introduction

This “Fact Sheet” provides basic information on the population and demographics for the Agincourt HDSS study area using data from the 2018 and 2019 annual updates across all villages in the study area. Whenever you use this information, please reference it as being obtained from MRC/Wits Rural Public Health and Health Transitions Research Unit (Agincourt).

Villages in the Agincourt Health and Socio-Demographic Surveillance (HDSS) System study area in 2018/2019 include:

Agincourt, Belfast, Croquet Lawn, Croquet Lawn B, Cunningmore A, Cunningmore B, Dumphries A, Dumphries B, Dumphries C, Huntington, Ireagh A, Ireagh B, Ireagh C, Justicia, Khaya Lami, Kildare A, Kildare B, Kumani, Lillydale A, Lillydale B, Makaringe, MP Stream, Newington B, Newington C, Rolle C, Somerset, Somerset C, and Xanthia.

Where is Lillydale A village in the MRC/Wits-Agincourt Unit Health and socio-Demographic System (HDSS) study area?



Lillydale A village population 2019

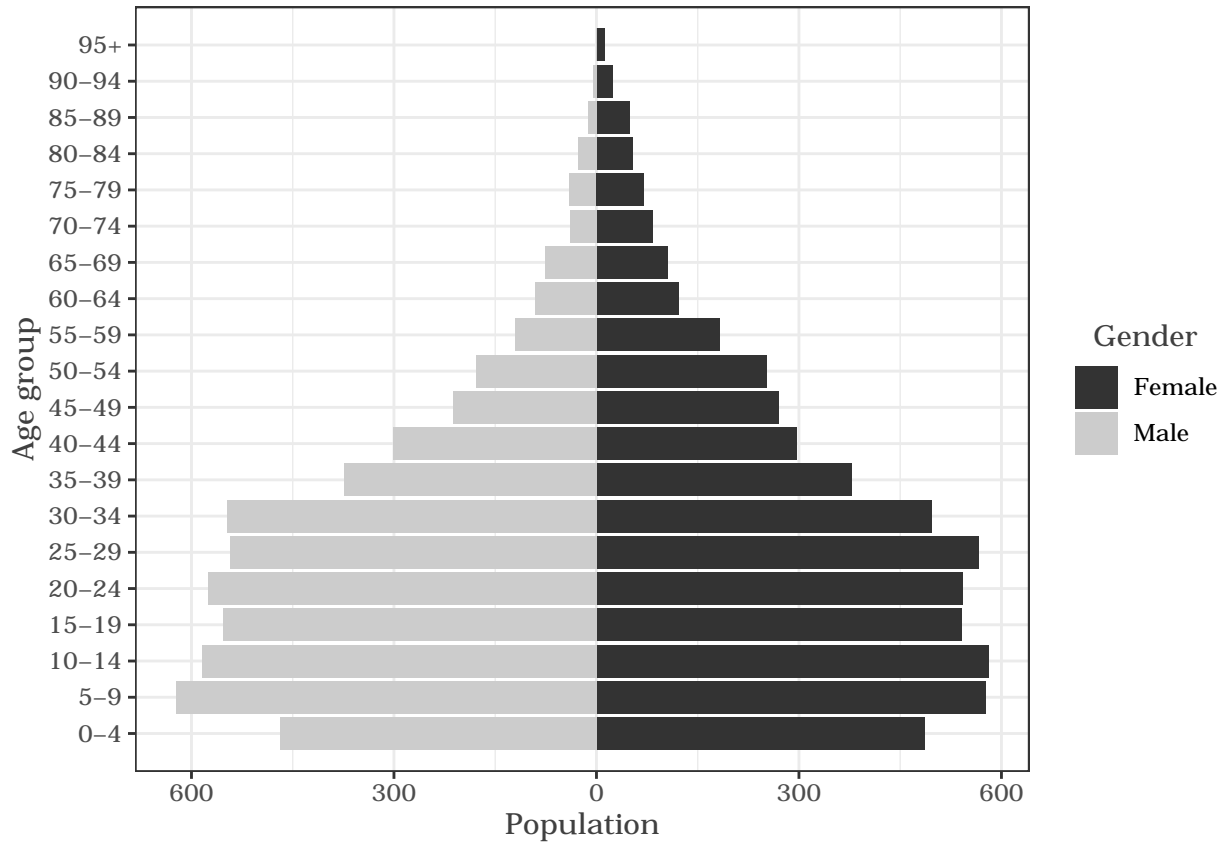
The numbers shown below are calculated according to numbers for the end of June 2019. The numbers are known as mid-year population figures.

Category	Total
Households	2221
Population	11073
Male	5375
Female	5698
Children under 5	955
Children of school-going age (5-19)	3460

Below you can see how many people were living in Lillydale A of different ages in June 2019.

Age group	Male	Female	Total
0-4	469	486	955
5-9	623	577	1200
10-14	585	581	1166
15-19	553	541	1094
20-24	575	543	1118
25-29	543	567	1110
30-34	547	497	1044
35-39	374	379	753
40-44	301	297	598
45-49	213	271	484
50-54	179	253	432
55-59	121	183	304
60-64	91	122	213
65-69	76	106	182
70-74	39	83	122
75-79	40	71	111
80-84	28	54	82
85-89	12	50	62
90-94	5	25	30
95+	1	12	13

Below you can see the population structure of Lillydale A for 2019.



Births

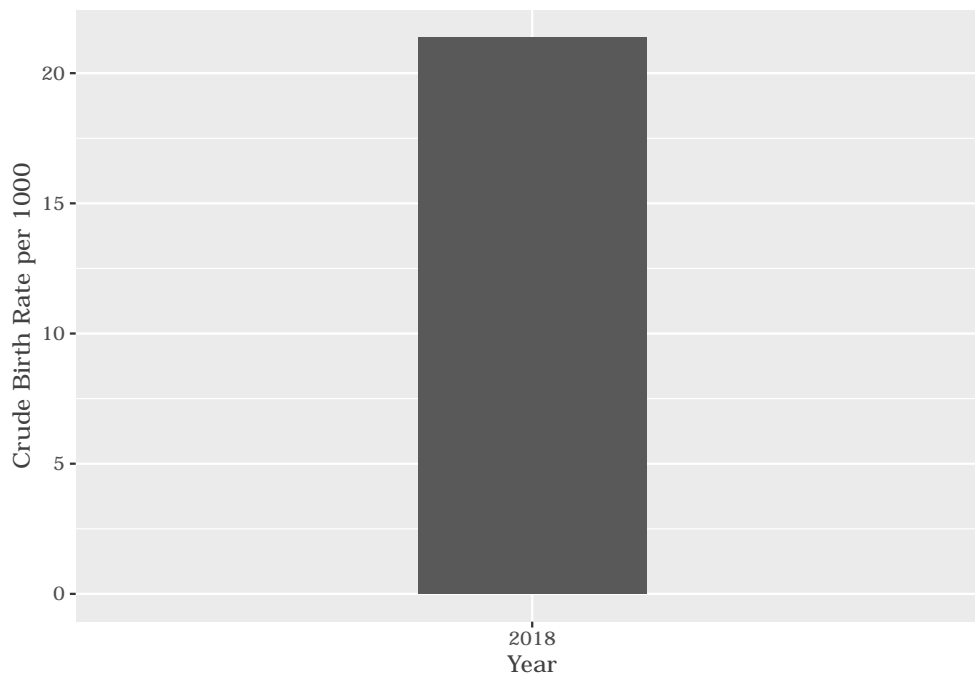
Number of Births by Sex

The number of births recorded in Lillydale A are shown below. We can only provide data to the end of 2018.

Category	Count
Male Births	104
Female Births	132
Total Births	236

Crude Birth Rate (how many babies born for every one thousand people)

The graph below shows the crude birth rates in Lillydale A in 2018.



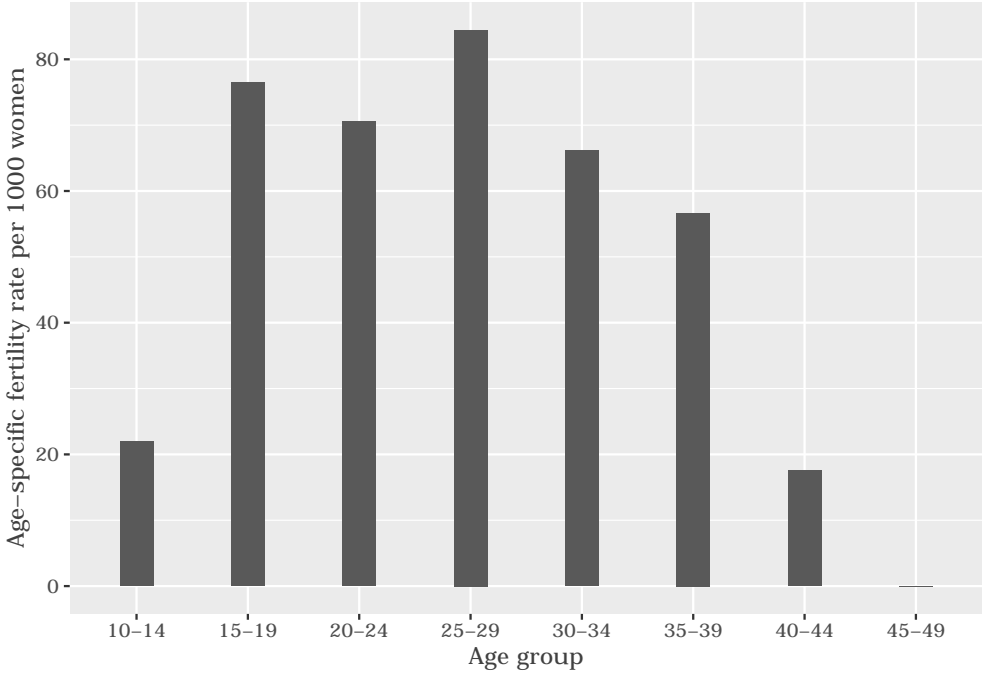
The crude birth rate is found by comparing the number of babies born to the total population. For every 1 000 people (all ages and both male and female) living in Lillydale A in the year of 2018, 21 babies were born.

Births by Mother's Age and Age Specific Fertility Rates

Research within the MRC/Wits-Agincourt Unit HDSS study area continues to look closely at fertility. You can see the number of babies born to mothers of different ages in the study area in 2018 below.

AgeGroup	ASFR
10-14	22
15-19	76
20-24	70
25-29	84
30-34	66
35-39	56
40-44	17
45-49	0

The age specific fertility rates of Lillydale A in 2018 are shown below.



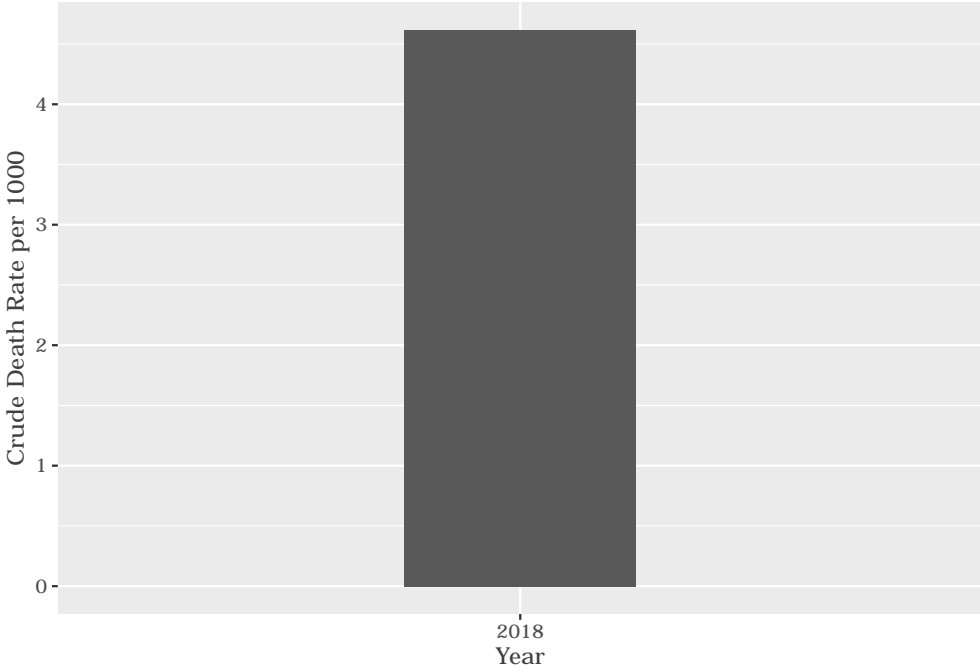
We find the age specific fertility rate by looking at how many women in a certain age group have had babies in a certain year. For example, we can see that in 2018, for the women in the age group 15-19, 76 out of every 1000 gave birth (if there had been over 1000 living in Lillydale A).

Deaths

Below you can see the total number of deaths that occurred in the Lillydale A in 2018.

Category	Count
Male Deaths	32
Female Deaths	19
Total Deaths	51

Below you can see the total number of death that occurred in the Lillydale A in 2018.



The crude death rate is found by looking at how many people died for every 1 000 people living in the population. In 2018, for every 1 000 people in the population of Lillydale A, 4 died.

Migration

Permanent migration patterns

Below you can see how many people have moved into and out of Lillydale A permanently for the year of 2018.

Category	Count
Male In-Migration	54
Female In-Migration	53
Total In-Migration	107

Category	Count
Male Out-Migration	74
Female Out-Migration	95
Total Out-Migration	169