

MRC/WITS-AGINCOURT UNIT STUDY AREA HDSS FACT SHEET

Kildare B

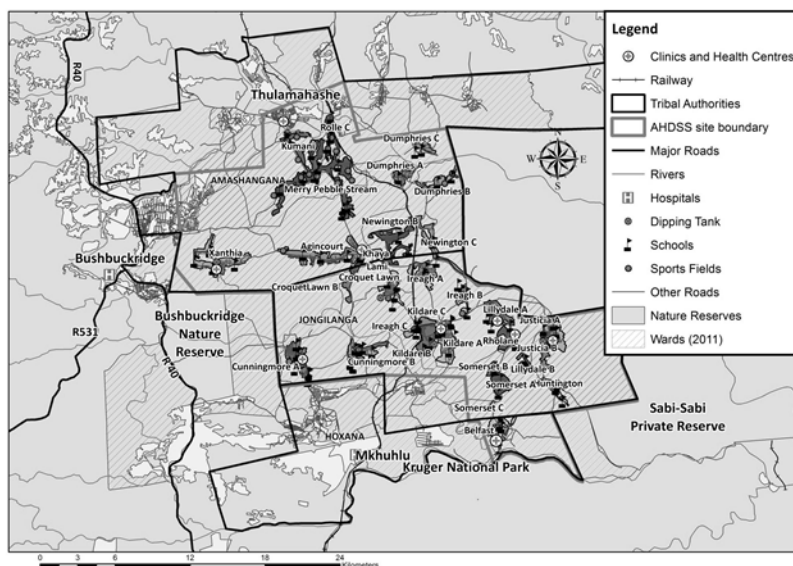
Introduction

This “Fact Sheet” provides basic information on the population and demographics for the Agincourt HDSS study area using data from the 2018 and 2019 annual updates across all villages in the study area. Whenever you use this information, please reference it as being obtained from MRC/Wits Rural Public Health and Health Transitions Research Unit (Agincourt).

Villages in the Agincourt Health and Socio-Demographic Surveillance (HDSS) System study area in 2018/2019 include:

Agincourt, Belfast, Croquet Lawn, Croquet Lawn B, Cunningmore A, Cunningmore B, Dumphries A, Dumphries B, Dumphries C, Huntington, Ireagh A, Ireagh B, Ireagh C, Justicia, Khaya Lami, Kildare A, Kildare B, Kumani, Lillydale A, Lillydale B, Makaringe, MP Stream, Newington B, Newington C, Rolle C, Somerset, Somerset C, and Xanthia.

Where is Kildare B village in the MRC/Wits-Agincourt Unit Health and socio-Demographic System (HDSS) study area?



Kildare B village population 2019

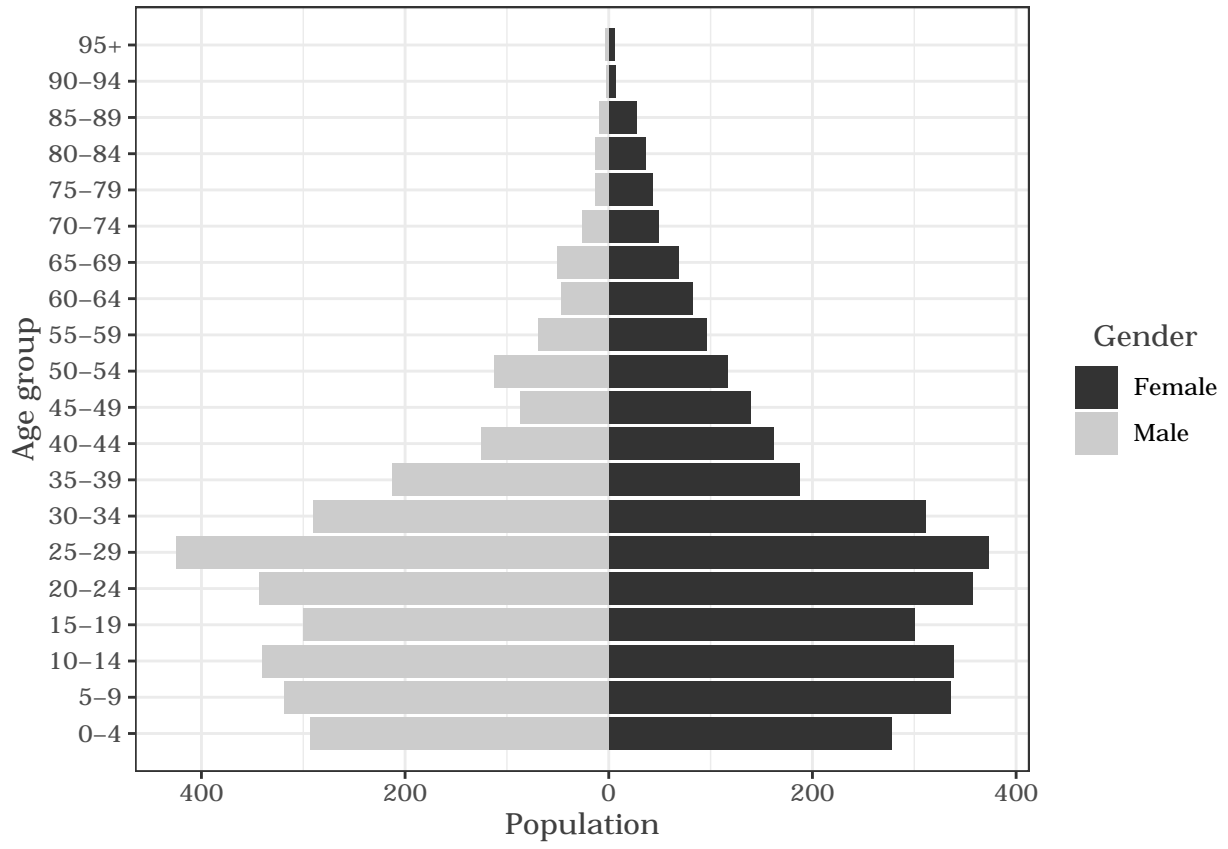
The numbers shown below are calculated according to numbers for the end of June 2019. The numbers are known as mid-year population figures.

| Category | Total |
|-------------------------------------|-------|
| Households | 1147 |
| Population | 6395 |
| Male | 3080 |
| Female | 3315 |
| Children under 5 | 571 |
| Children of school-going age (5-19) | 1934 |

Below you can see how many people were living in Kildare B of different ages in June 2019.

| Age group | Male | Female | Total |
|-----------|------|--------|-------|
| 0-4 | 293 | 278 | 571 |
| 5-9 | 319 | 336 | 655 |
| 10-14 | 340 | 339 | 679 |
| 15-19 | 300 | 300 | 600 |
| 20-24 | 343 | 357 | 700 |
| 25-29 | 425 | 373 | 798 |
| 30-34 | 290 | 311 | 601 |
| 35-39 | 213 | 188 | 401 |
| 40-44 | 125 | 162 | 287 |
| 45-49 | 87 | 139 | 226 |
| 50-54 | 112 | 117 | 229 |
| 55-59 | 69 | 96 | 165 |
| 60-64 | 47 | 82 | 129 |
| 65-69 | 51 | 69 | 120 |
| 70-74 | 26 | 49 | 75 |
| 75-79 | 13 | 43 | 56 |
| 80-84 | 13 | 36 | 49 |
| 85-89 | 9 | 27 | 36 |
| 90-94 | 2 | 7 | 9 |
| 95+ | 3 | 6 | 9 |

Below you can see the population structure of Kildare B for 2019.



Births

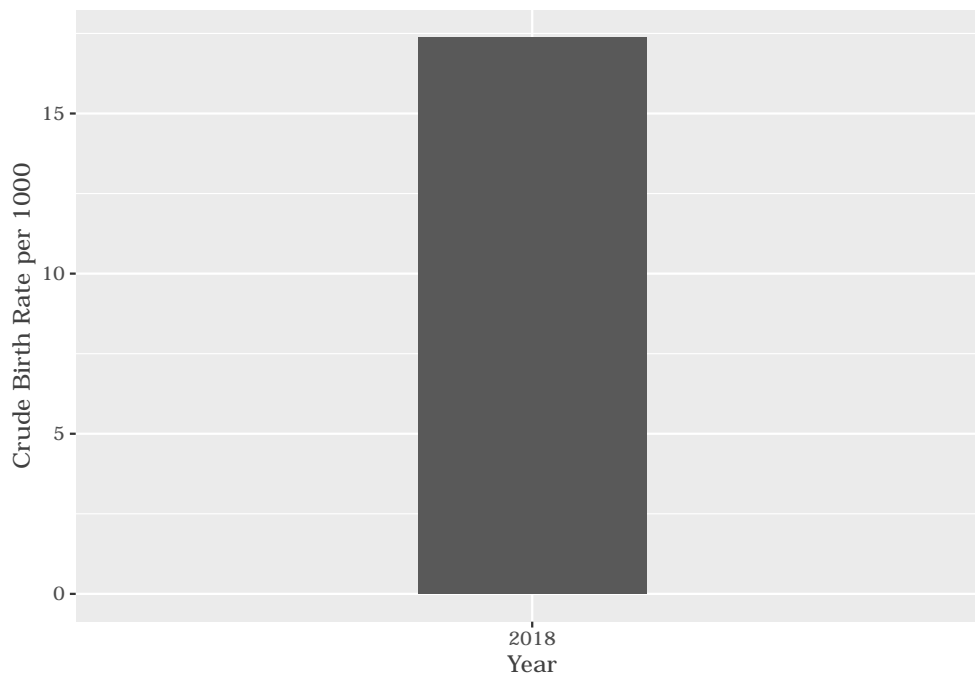
Number of Births by Sex

The number of births recorded in Kildare B are shown below. We can only provide data to the end of 2018.

| Category | Count |
|---------------|-------|
| Male Births | 56 |
| Female Births | 54 |
| Total Births | 110 |

Crude Birth Rate (how many babies born for every one thousand people)

The graph below shows the crude birth rates in Kildare B in 2018.



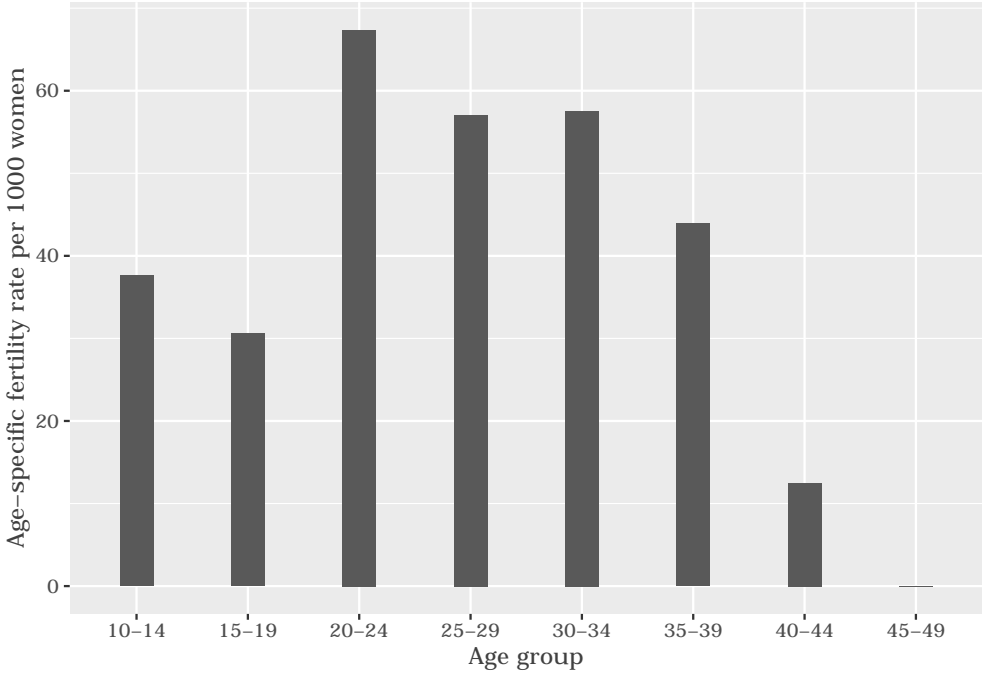
The crude birth rate is found by comparing the number of babies born to the total population. For every 1 000 people (all ages and both male and female) living in Kildare B in the year of 2018, 17 babies were born.

Births by Mother’s Age and Age Specific Fertility Rates

Research within the MRC/Wits-Agincourt Unit HDSS study area continues to look closely at fertility. You can see the number of babies born to mothers of different ages in the study area in 2018 below.

| AgeGroup | ASFR |
|----------|------|
| 10-14 | 37 |
| 15-19 | 30 |
| 20-24 | 67 |
| 25-29 | 57 |
| 30-34 | 57 |
| 35-39 | 43 |
| 40-44 | 12 |
| 45-49 | 0 |

The age specific fertility rates of Kildare B in 2018 are shown below.



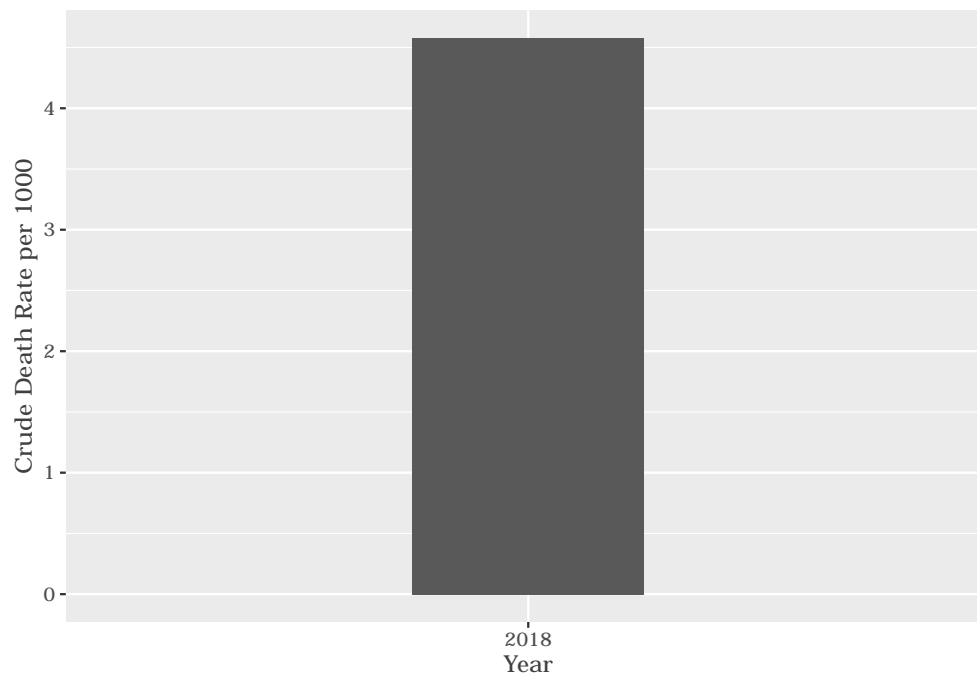
We find the age specific fertility rate by looking at how many women in a certain age group have had babies in a certain year. For example, we can see that in 2018, for the women in the age group 15-19, 30 out of every 1000 gave birth (if there had been over 1000 living in Kildare B).

Deaths

Below you can see the total number of deaths that occurred in the Kildare B in 2018.

| Category | Count |
|---------------|-------|
| Male Deaths | 14 |
| Female Deaths | 15 |
| Total Deaths | 29 |

Below you can see the total number of death that occurred in the Kildare B in 2018.



The crude death rate is found by looking at how many people died for every 1 000 people living in the population. In 2018, for every 1 000 people in the population of Kildare B, 4 died.

Migration

Permanent migration patterns

Below you can see how many people have moved into and out of Kildare B permanently for the year of 2018.

| Category | Count |
|---------------------|-------|
| Male In-Migration | 25 |
| Female In-Migration | 39 |
| Total In-Migration | 64 |

| Category | Count |
|----------------------|-------|
| Male Out-Migration | 24 |
| Female Out-Migration | 37 |
| Total Out-Migration | 61 |