

# MRC/WITS-AGINCOURT UNIT STUDY AREA HDSS FACT SHEET

## Khaya Lami

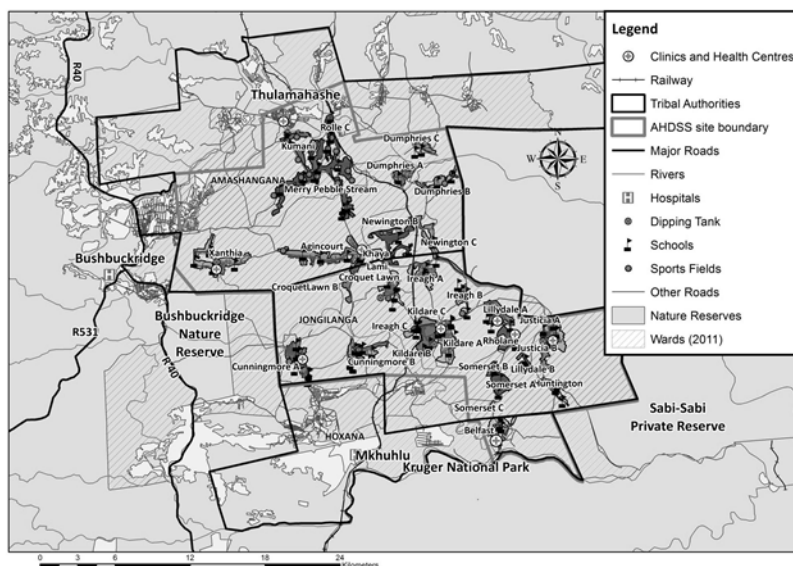
### *Introduction*

This “Fact Sheet” provides basic information on the population and demographics for the Agincourt HDSS study area using data from the 2018 and 2019 annual updates across all villages in the study area. Whenever you use this information, please reference it as being obtained from MRC/Wits Rural Public Health and Health Transitions Research Unit (Agincourt).

*Villages in the Agincourt Health and Socio-Demographic Surveillance (HDSS) System study area in 2018/2019 include:*

Agincourt, Belfast, Croquet Lawn, Croquet Lawn B, Cunningsmore A, Cunningsmore B, Dumphries A, Dumphries B, Dumphries C, Huntington, Ireagh A, Ireagh B, Ireagh C, Justicia, Khaya Lami, Kildare A, Kildare B, Kumani, Lillydale A, Lillydale B, Makaringe, MP Stream, Newington B, Newington C, Rolle C, Somerset, Somerset C, and Xanthia.

Where is Khaya Lami village in the MRC/Wits-Agincourt Unit Health and socio-Demographic System (HDSS) study area?



## Khaya Lami village population 2019

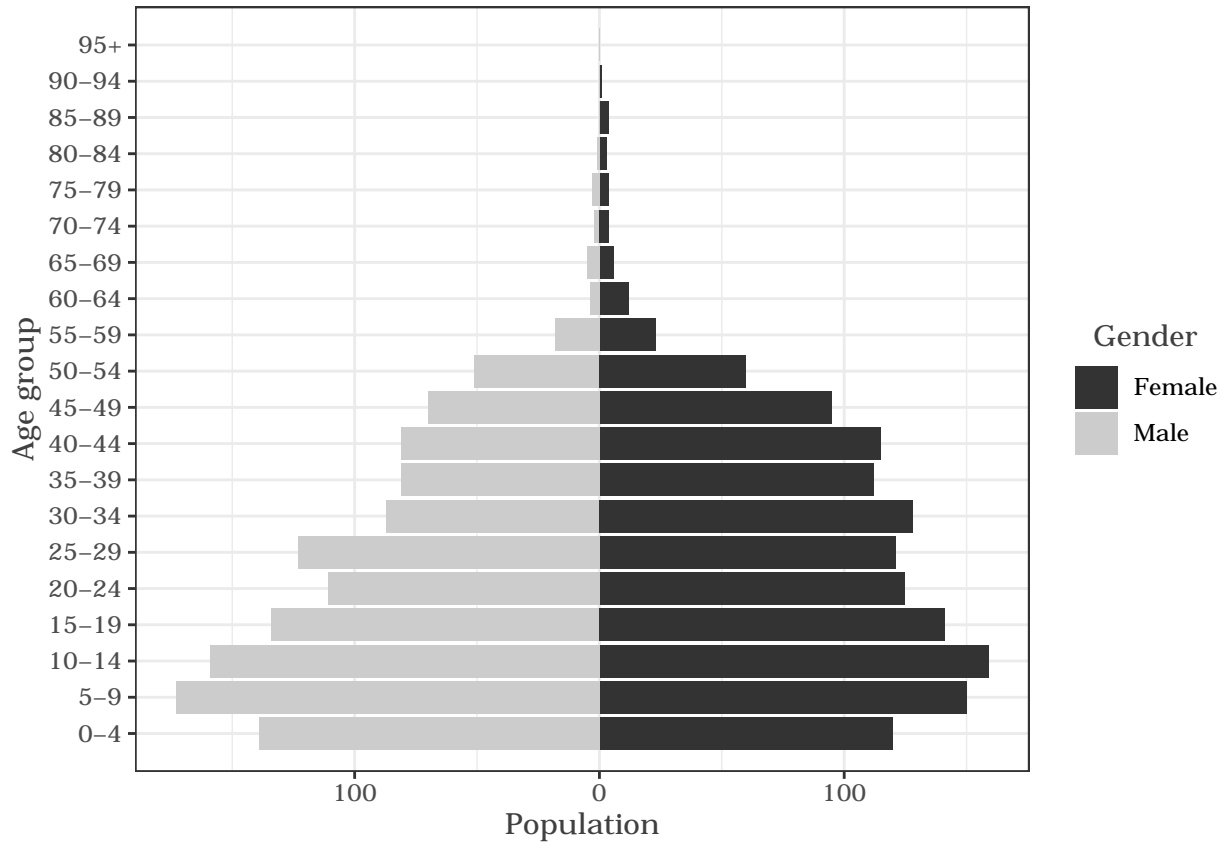
The numbers shown below are calculated according to numbers for the end of June 2019. The numbers are known as mid-year population figures.

Category	Total
Households	762
Population	2625
Male	1242
Female	1383
Children under 5	259
Children of school-going age (5-19)	916

Below you can see how many people were living in Khaya Lami of different ages in June 2019.

Age group	Male	Female	Total
0-4	139	120	259
5-9	173	150	323
10-14	159	159	318
15-19	134	141	275
20-24	111	125	236
25-29	123	121	244
30-34	87	128	215
35-39	81	112	193
40-44	81	115	196
45-49	70	95	165
50-54	51	60	111
55-59	18	23	41
60-64	4	12	16
65-69	5	6	11
70-74	2	4	6
75-79	3	4	7
80-84	1	3	4
85-89	0	4	4
90-94	0	1	1
95+	0	0	0

Below you can see the population structure of Khaya Lami for 2019.



## *Births*

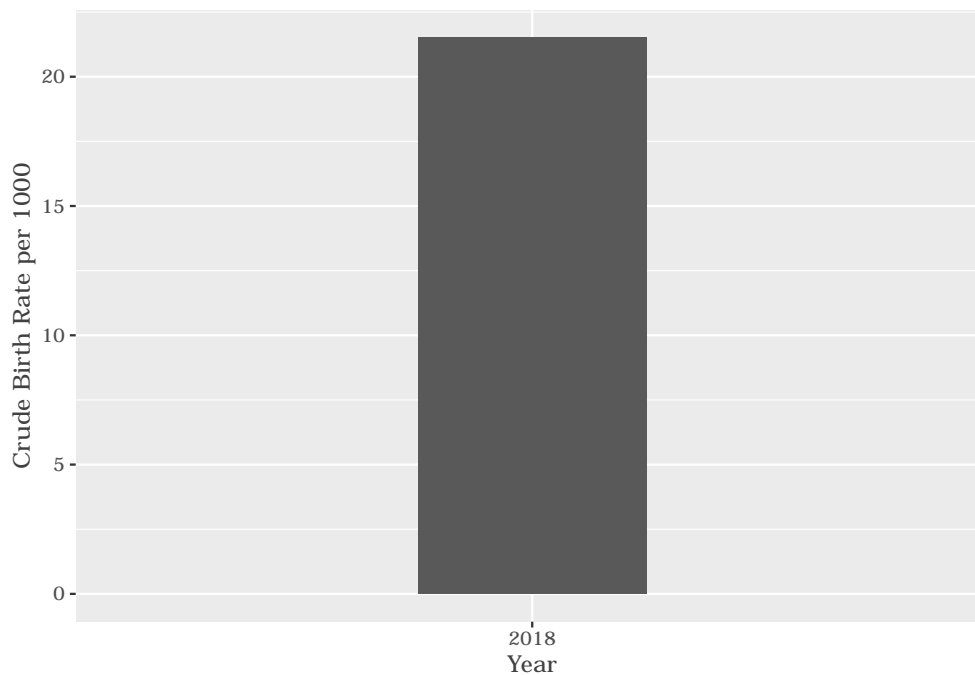
### Number of Births by Sex

The number of births recorded in Khaya Lami are shown below. We can only provide data to the end of 2018.

Category	Count
Male Births	34
Female Births	24
Total Births	58

### Crude Birth Rate (how many babies born for every one thousand people)

The graph below shows the crude birth rates in Khaya Lami in 2018.



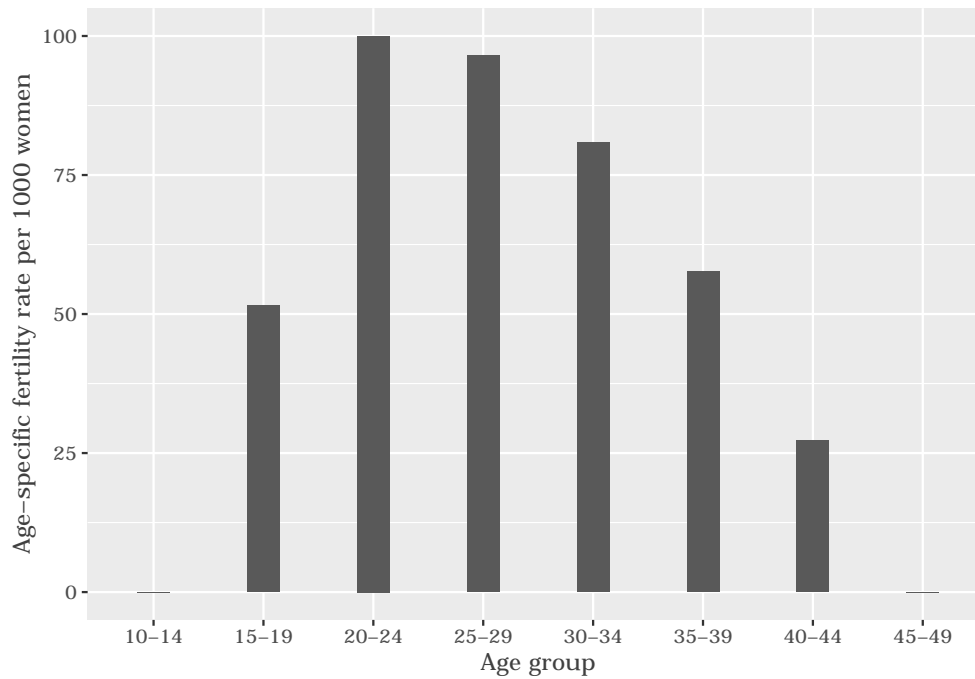
The crude birth rate is found by comparing the number of babies born to the total population. For every 1 000 people (all ages and both male and female) living in Khaya Lami in the year of 2018, 21 babies were born.

## Births by Mother's Age and Age Specific Fertility Rates

Research within the MRC/Wits-Agincourt Unit HDSS study area continues to look closely at fertility. You can see the number of babies born to mothers of different ages in the study area in 2018 below.

AgeGroup	ASFR
10-14	0
15-19	51
20-24	100
25-29	96
30-34	80
35-39	57
40-44	27
45-49	0

The age specific fertility rates of Khaya Lami in 2018 are shown below.



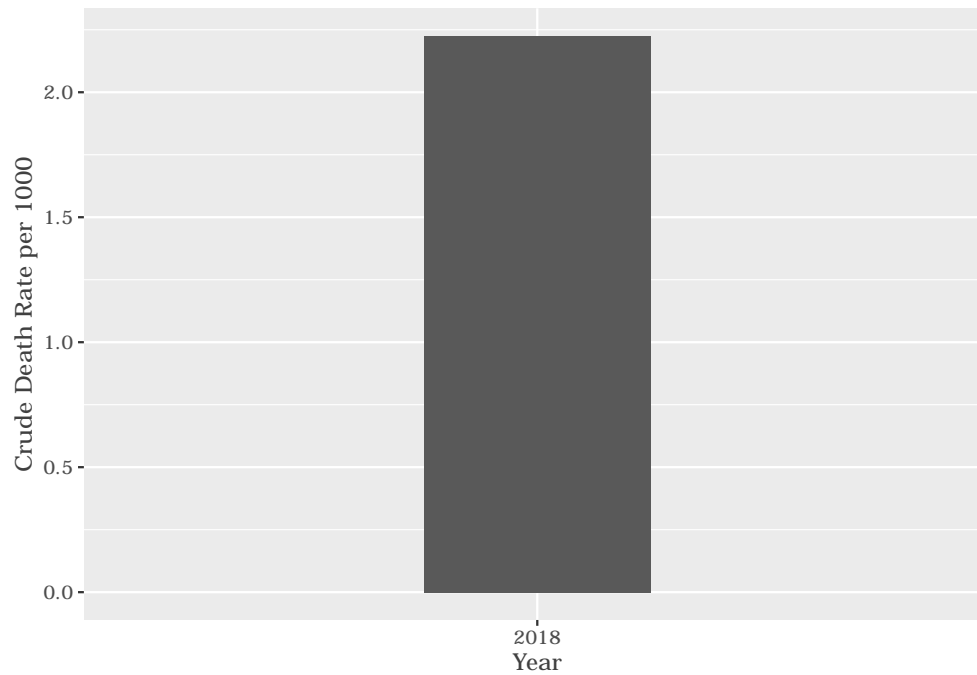
We find the age specific fertility rate by looking at how many women in a certain age group have had babies in a certain year. For example, we can see that in 2018, for the women in the age group 15-19, 51 out of every 1000 gave birth (if there had been over 1000 living in Khaya Lami).

## *Deaths*

Below you can see the total number of deaths that occurred in the Khaya Lami in 2018.

Category	Count
Male Deaths	4
Female Deaths	2
Total Deaths	6

Below you can see the total number of death that occurred in the Khaya Lami in 2018.



The crude death rate is found by looking at how many people died for every 1 000 people living in the population. In 2018, for every 1 000 people in the population of Khaya Lami, 2 died.

## *Migration*

### **Permanent migration patterns**

Below you can see how many people have moved into and out of Khaya Lami permanently for the year of 2018.

Category	Count
Male In-Migration	26
Female In-Migration	34
Total In-Migration	60

Category	Count
Male Out-Migration	19
Female Out-Migration	39
Total Out-Migration	58