

MRC/WITS-AGINCOURT UNIT STUDY AREA HDSS FACT SHEET

Dumphries B

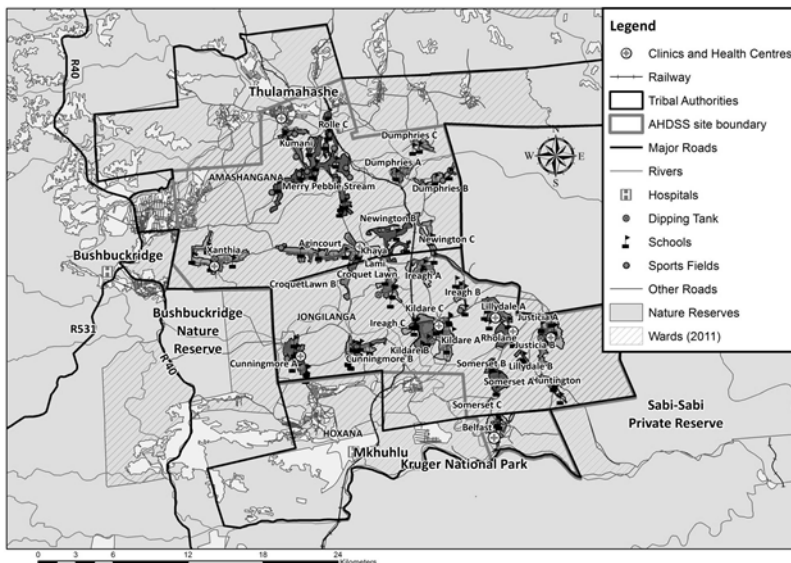
Introduction

This “Fact Sheet” provides basic information on the population and demographics for the Agincourt HDSS study area using data from the 2018 and 2019 annual updates across all villages in the study area. Whenever you use this information, please reference it as being obtained from MRC/Wits Rural Public Health and Health Transitions Research Unit (Agincourt).

Villages in the Agincourt Health and Socio-Demographic Surveillance (HDSS) System study area in 2018/2019 include:

Agincourt, Belfast, Croquet Lawn, Croquet Lawn B, Cunningmore A, Cunningmore B, Dumphries A, Dumphries B, Dumphries C, Huntington, Ireagh A, Ireagh B, Ireagh C, Justicia, Khaya Lami, Kildare A, Kildare B, Kumani, Lillydale A, Lillydale B, Makaringe, MP Stream, Newington B, Newington C, Rolle C, Somerset, Somerset C, and Xanthia.

Where is Dumphries B village in the MRC/Wits-Agincourt Unit Health and socio-Demographic System (HDSS) study area?



Dumfries B village population 2019

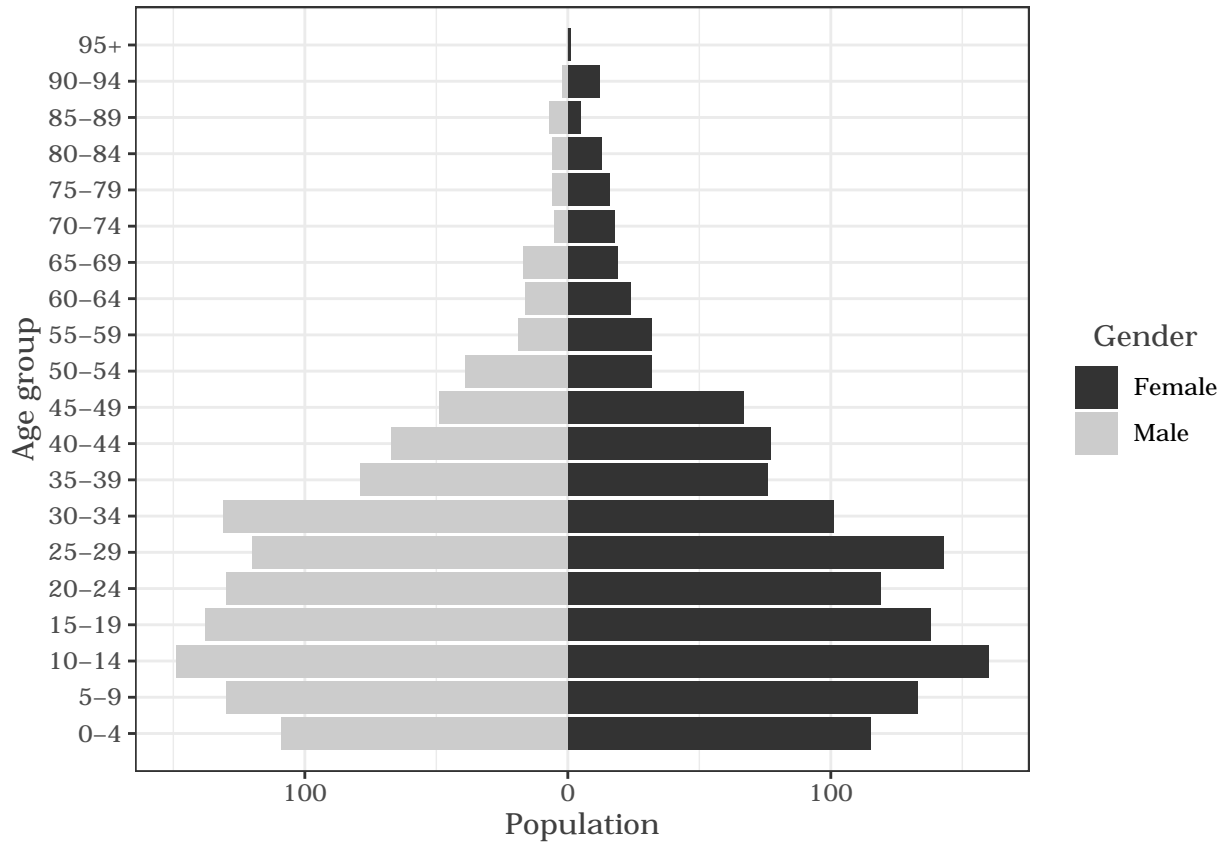
The numbers shown below are calculated according to numbers for the end of June 2019. The numbers are known as mid-year population figures.

Category	Total
Households	491
Population	2520
Male	1219
Female	1301
Children under 5	224
Children of school-going age (5-19)	848

Below you can see how many people were living in Dumfries B of different ages in June 2019.

Age group	Male	Female	Total
0-4	109	115	224
5-9	130	133	263
10-14	149	160	309
15-19	138	138	276
20-24	130	119	249
25-29	120	143	263
30-34	131	101	232
35-39	79	76	155
40-44	67	77	144
45-49	49	67	116
50-54	39	32	71
55-59	19	32	51
60-64	16	24	40
65-69	17	19	36
70-74	5	18	23
75-79	6	16	22
80-84	6	13	19
85-89	7	5	12
90-94	2	12	14
95+	0	1	1

Below you can see the population structure of Dumphries B for 2019.



Births

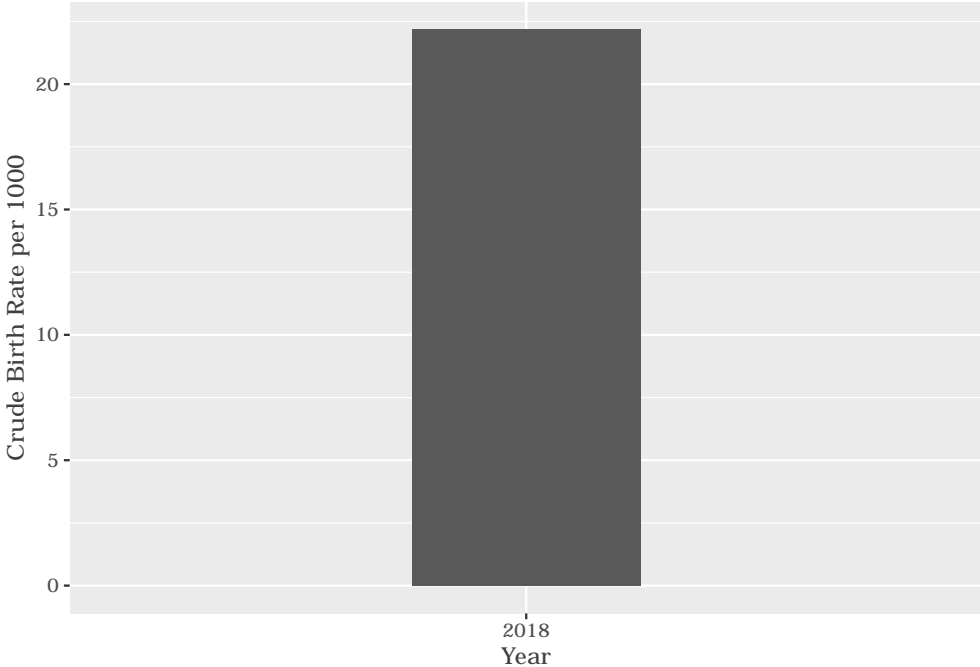
Number of Births by Sex

The number of births recorded in Dumphries B are shown below. We can only provide data to the end of 2018.

Category	Count
Male Births	24
Female Births	32
Total Births	56

Crude Birth Rate (how many babies born for every one thousand people)

The graph below shows the crude birth rates in Dumphries B in 2018.



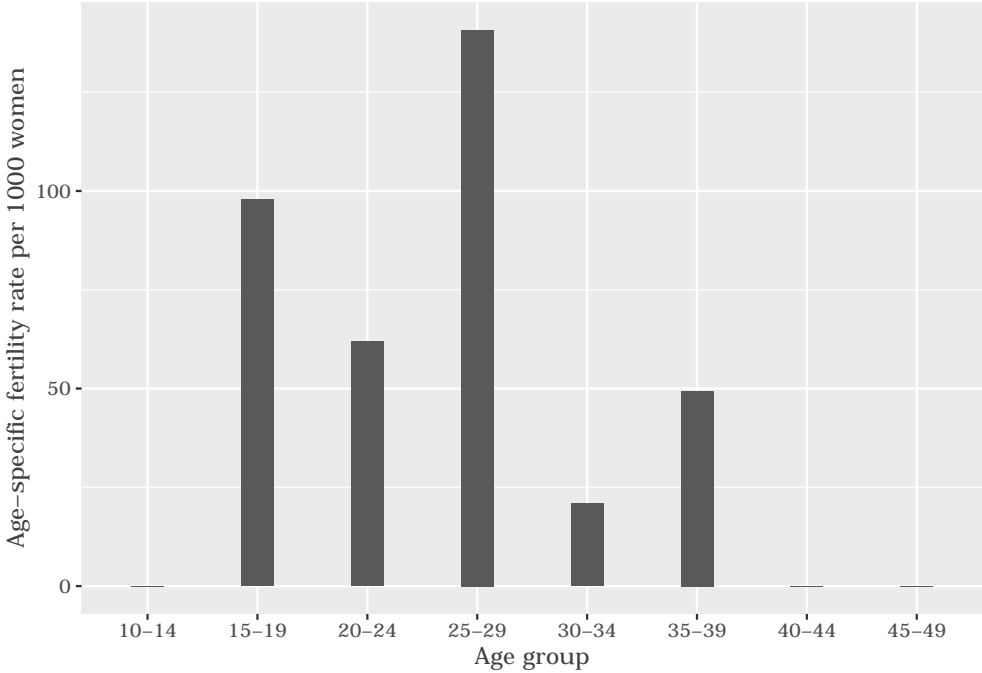
The crude birth rate is found by comparing the number of babies born to the total population. For every 1 000 people (all ages and both male and female) living in Dumphries B in the year of 2018, 22 babies were born.

Births by Mother’s Age and Age Specific Fertility Rates

Research within the MRC/Wits-Agincourt Unit HDSS study area continues to look closely at fertility. You can see the number of babies born to mothers of different ages in the study area in 2018 below.

AgeGroup	ASFR
10-14	0
15-19	97
20-24	61
25-29	140
30-34	20
35-39	49
40-44	0
45-49	0

The age specific fertility rates of Dumphries B in 2018 are shown below.



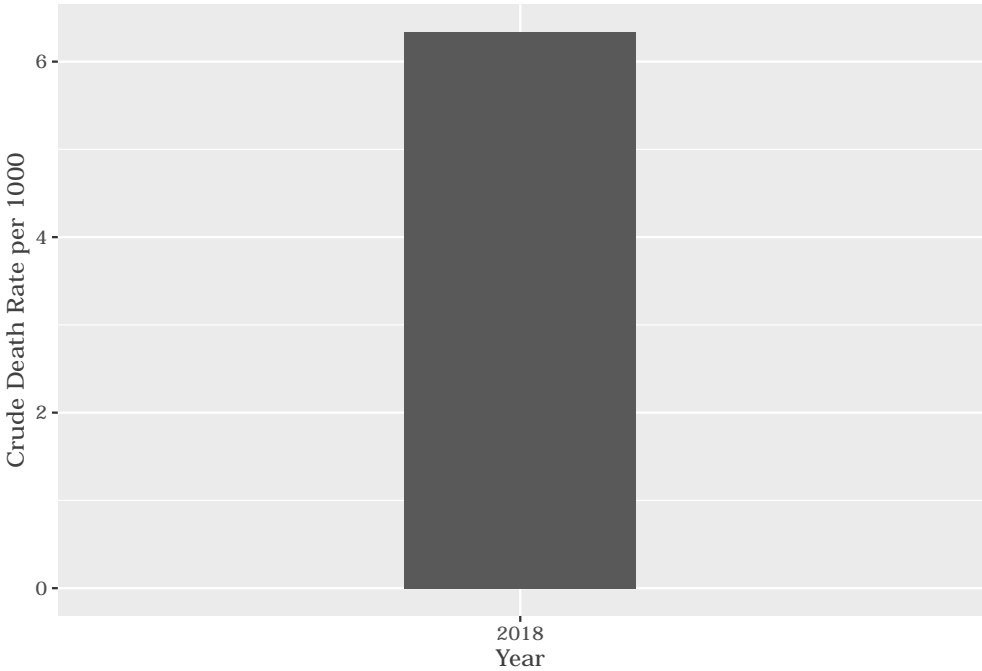
We find the age specific fertility rate by looking at how many women in a certain age group have had babies in a certain year. For example, we can see that in 2018, for the women in the age group 15-19, 97 out of every 1000 gave birth (if there had been over 1000 living in Dumphries B).

Deaths

Below you can see the total number of deaths that occurred in the Dumphries B in 2018.

Category	Count
Male Deaths	9
Female Deaths	7
Total Deaths	16

Below you can see the total number of death that occurred in the Dumphries B in 2018.



The crude death rate is found by looking at how many people died for every 1 000 people living in the population. In 2018, for every 1 000 people in the population of Dumphries B, 6 died.

Migration

Permanent migration patterns

Below you can see how many people have moved into and out of Dumphries B permanently for the year of 2018.

Category	Count
Male In-Migration	8
Female In-Migration	22
Total In-Migration	30

Category	Count
Male Out-Migration	9
Female Out-Migration	23
Total Out-Migration	32