

MRC/WITS-AGINCOURT UNIT STUDY AREA HDSS FACT SHEET

Croquetlawn

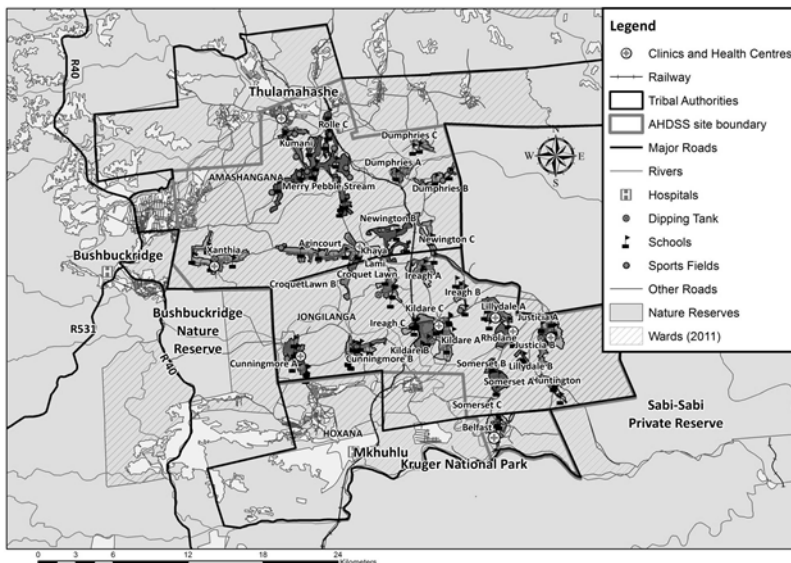
Introduction

This “Fact Sheet” provides basic information on the population and demographics for the Agincourt HDSS study area using data from the 2018 and 2019 annual updates across all villages in the study area. Whenever you use this information, please reference it as being obtained from MRC/Wits Rural Public Health and Health Transitions Research Unit (Agincourt).

Villages in the Agincourt Health and Socio-Demographic Surveillance (HDSS) System study area in 2018/2019 include:

Agincourt, Belfast, Croquet Lawn, Croquet Lawn B, Cunningmore A, Cunningmore B, Dumphries A, Dumphries B, Dumphries C, Huntington, Ireagh A, Ireagh B, Ireagh C, Justicia, Khaya Lami, Kildare A, Kildare B, Kumani, Lillydale A, Lillydale B, Makaringe, MP Stream, Newington B, Newington C, Rolle C, Somerset, Somerset C, and Xanthia.

Where is Croquetlawn village in the MRC/Wits-Agincourt Unit Health and socio-Demographic System (HDSS) study area?



Croquetlawn village population 2019

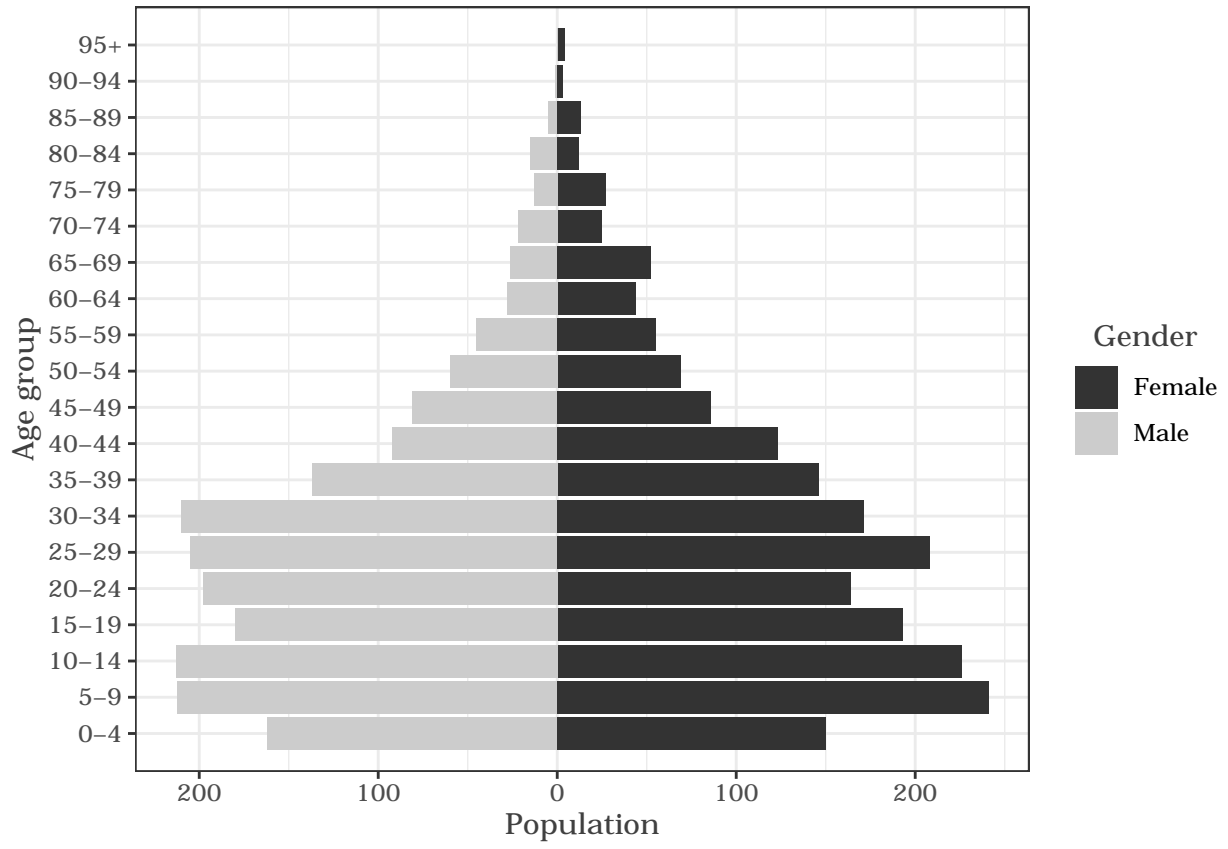
The numbers shown below are calculated according to numbers for the end of June 2019. The numbers are known as mid-year population figures.

Category	Total
Households	778
Population	3917
Male	1905
Female	2012
Children under 5	312
Children of school-going age (5-19)	1265

Below you can see how many people were living in Croquetlawn of different ages in June 2019.

Age group	Male	Female	Total
0-4	162	150	312
5-9	212	241	453
10-14	213	226	439
15-19	180	193	373
20-24	198	164	362
25-29	205	208	413
30-34	210	171	381
35-39	137	146	283
40-44	92	123	215
45-49	81	86	167
50-54	60	69	129
55-59	45	55	100
60-64	28	44	72
65-69	26	52	78
70-74	22	25	47
75-79	13	27	40
80-84	15	12	27
85-89	5	13	18
90-94	1	3	4
95+	0	4	4

Below you can see the population structure of Croquetlawn for 2019.



Births

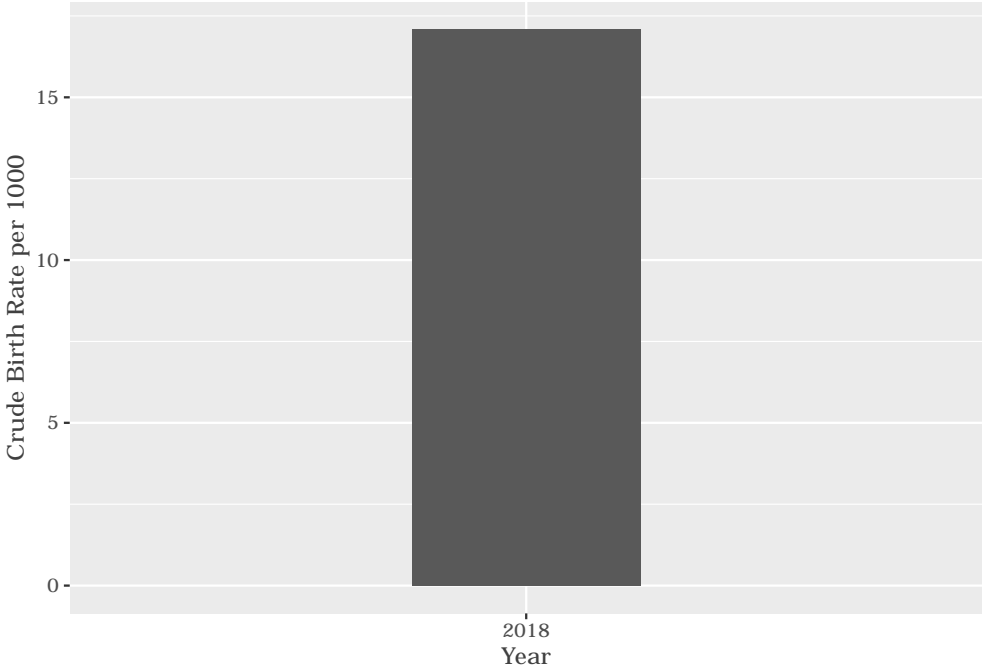
Number of Births by Sex

The number of births recorded in Croquetlawn are shown below. We can only provide data to the end of 2018.

Category	Count
Male Births	35
Female Births	32
Total Births	67

Crude Birth Rate (how many babies born for every one thousand people)

The graph below shows the crude birth rates in Croquetlawn in 2018.



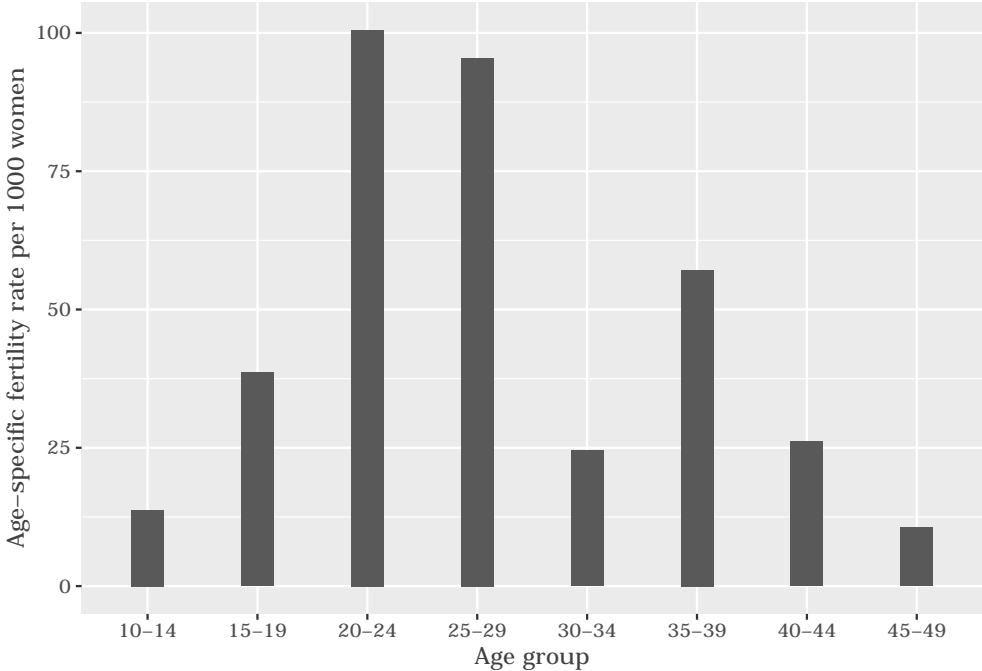
The crude birth rate is found by comparing the number of babies born to the total population. For every 1 000 people (all ages and both male and female) living in Croquetlawn in the year of 2018, 17 babies were born.

Births by Mother's Age and Age Specific Fertility Rates

Research within the MRC/Wits-Agincourt Unit HDSS study area continues to look closely at fertility. You can see the number of babies born to mothers of different ages in the study area in 2018 below.

AgeGroup	ASFR
10-14	13
15-19	38
20-24	100
25-29	95
30-34	24
35-39	57
40-44	26
45-49	10

The age specific fertility rates of Croquetlawn in 2018 are shown below.



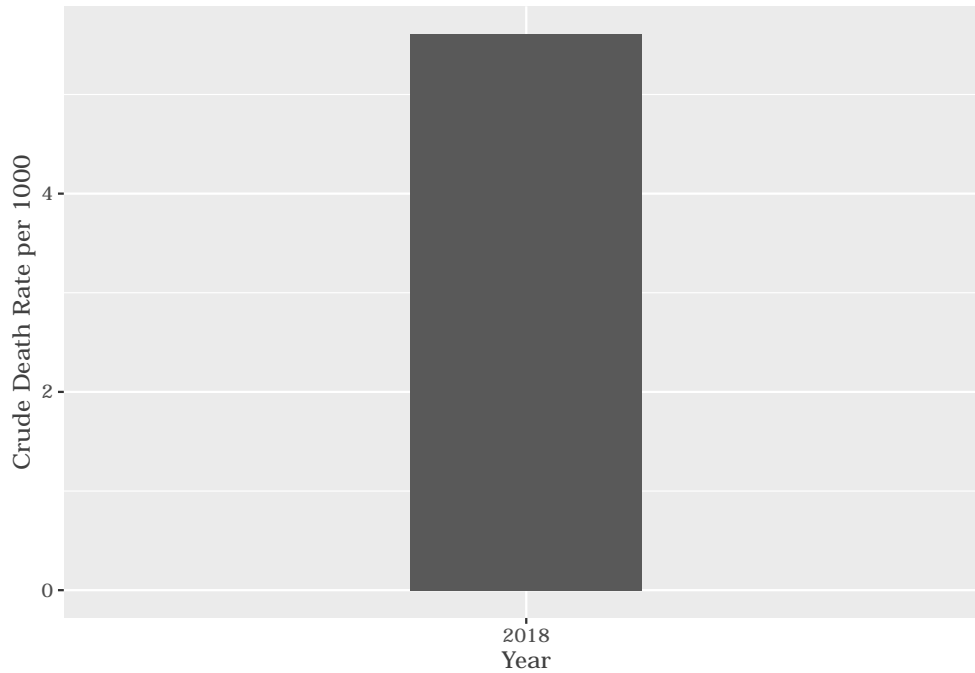
We find the age specific fertility rate by looking at how many women in a certain age group have had babies in a certain year. For example, we can see that in 2018, for the women in the age group 15-19, 38 out of every 1000 gave birth (if there had been over 1000 living in Croquetlawn).

Deaths

Below you can see the total number of deaths that occurred in the Croquetlawn in 2018.

Category	Count
Male Deaths	8
Female Deaths	14
Total Deaths	22

Below you can see the total number of death that occurred in the Croquetlawn in 2018.



The crude death rate is found by looking at how many people died for every 1 000 people living in the population. In 2018, for every 1 000 people in the population of Croquetlawn, 5 died.

Migration

Permanent migration patterns

Below you can see how many people have moved into and out of Croquetlawn permanently for the year of 2018.

Category	Count
Male In-Migration	28
Female In-Migration	42
Total In-Migration	70

Category	Count
Male Out-Migration	27
Female Out-Migration	60
Total Out-Migration	87