

MRC/WITS-AGINCOURT UNIT STUDY AREA HDSS FACT SHEET

Croquet Lawn B

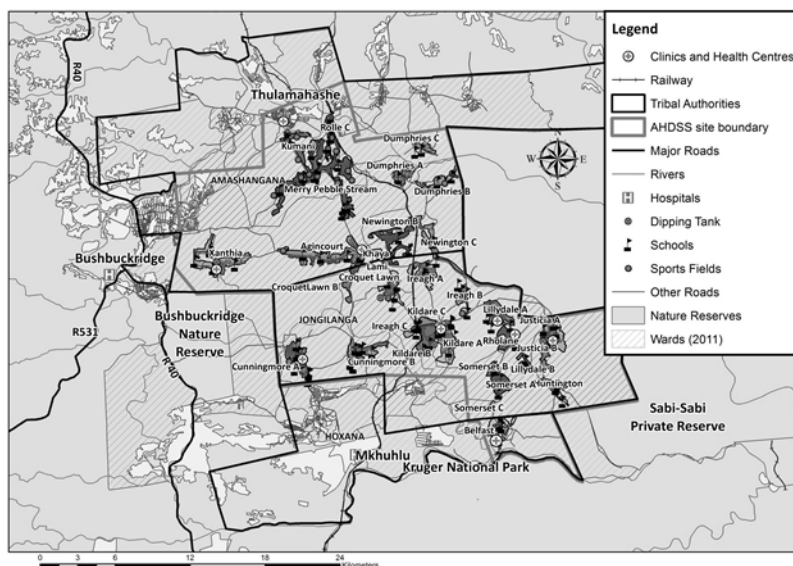
Introduction

This “Fact Sheet” provides basic information on the population and demographics for the Agincourt HDSS study area using data from the 2018 and 2019 annual updates across all villages in the study area. Whenever you use this information, please reference it as being obtained from MRC/Wits Rural Public Health and Health Transitions Research Unit (Agincourt).

Villages in the Agincourt Health and Socio-Demographic Surveillance (HDSS) System study area in 2018/2019 include:

Agincourt, Belfast, Croquet Lawn, Croquet Lawn B, Cunningmore A, Cunningmore B, Dumphries A, Dumphries B, Dumphries C, Huntington, Ireagh A, Ireagh B, Ireagh C, Justicia, Khaya Lami, Kildare A, Kildare B, Kumani, Lillydale A, Lillydale B, Makaringe, MP Stream, Newington B, Newington C, Rolle C, Somerset, Somerset C, and Xanthia.

Where is Croquet Lawn B village in the MRC/Wits-Agincourt Unit Health and socio-Demographic System (HDSS) study area?



Croquet Lawn B village population 2019

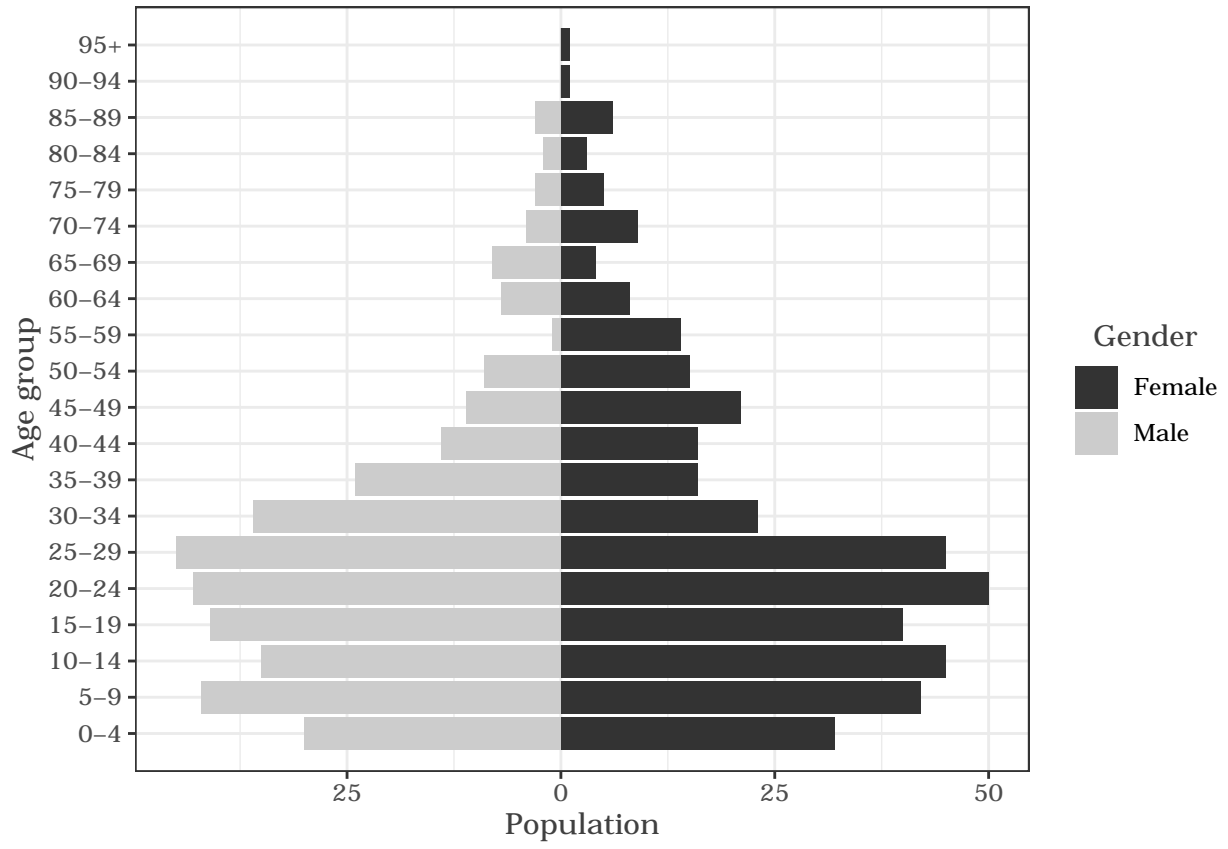
The numbers shown below are calculated according to numbers for the end of June 2019. The numbers are known as mid-year population figures.

Category	Total
Households	133
Population	754
Male	358
Female	396
Children under 5	62
Children of school-going age (5-19)	245

Below you can see how many people were living in Croquet Lawn B of different ages in June 2019.

Age group	Male	Female	Total
0-4	30	32	62
5-9	42	42	84
10-14	35	45	80
15-19	41	40	81
20-24	43	50	93
25-29	45	45	90
30-34	36	23	59
35-39	24	16	40
40-44	14	16	30
45-49	11	21	32
50-54	9	15	24
55-59	1	14	15
60-64	7	8	15
65-69	8	4	12
70-74	4	9	13
75-79	3	5	8
80-84	2	3	5
85-89	3	6	9
90-94	0	1	1
95+	0	1	1

Below you can see the population structure of Croquet Lawn B for 2019.



Births

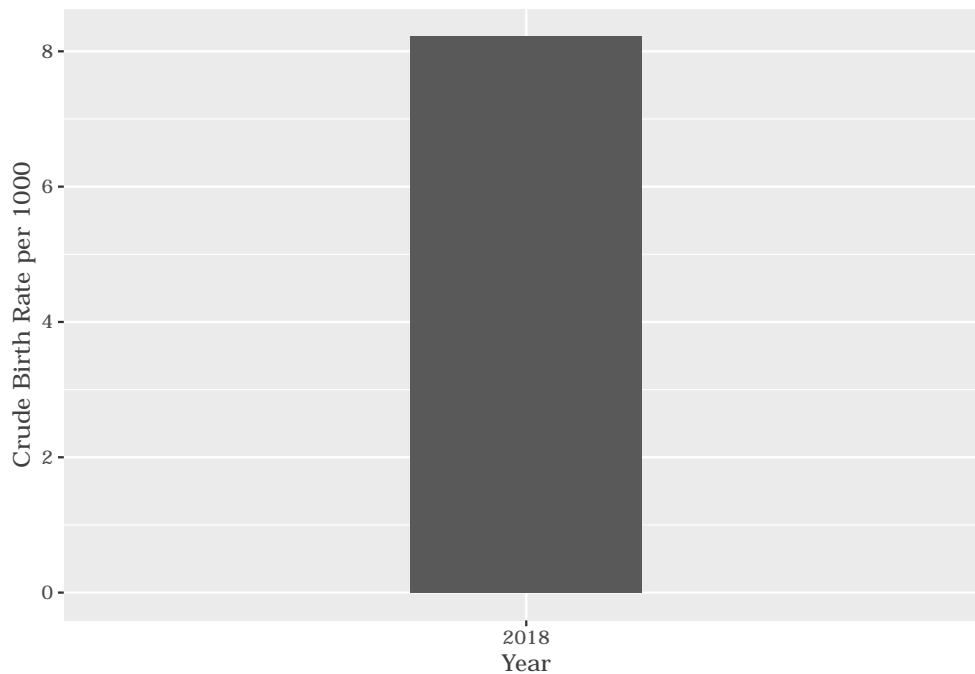
Number of Births by Sex

The number of births recorded in Croquet Lawn B are shown below. We can only provide data to the end of 2018.

Category	Count
Male Births	5
Female Births	1
Total Births	6

Crude Birth Rate (how many babies born for every one thousand people)

The graph below shows the crude birth rates in Croquet Lawn B in 2018.



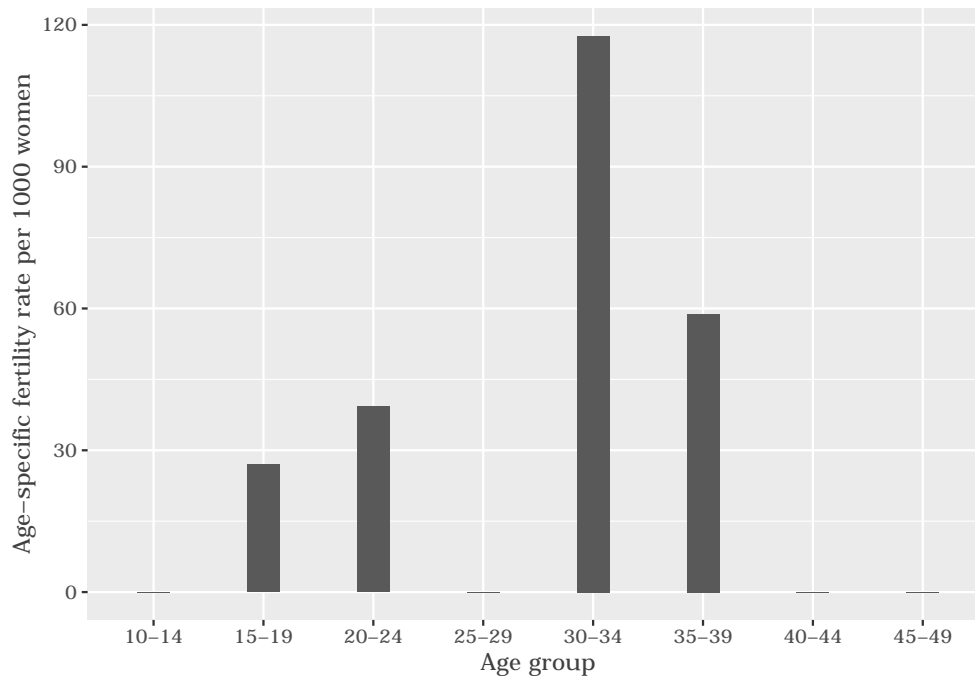
The crude birth rate is found by comparing the number of babies born to the total population. For every 1 000 people (all ages and both male and female) living in Croquet Lawn B in the year of 2018, 8 babies were born.

Births by Mother's Age and Age Specific Fertility Rates

Research within the MRC/Wits-Agincourt Unit HDSS study area continues to look closely at fertility. You can see the number of babies born to mothers of different ages in the study area in 2018 below.

AgeGroup	ASFR
10-14	0
15-19	27
20-24	39
25-29	0
30-34	117
35-39	58
40-44	0
45-49	0

The age specific fertility rates of Croquet Lawn B in 2018 are shown below.



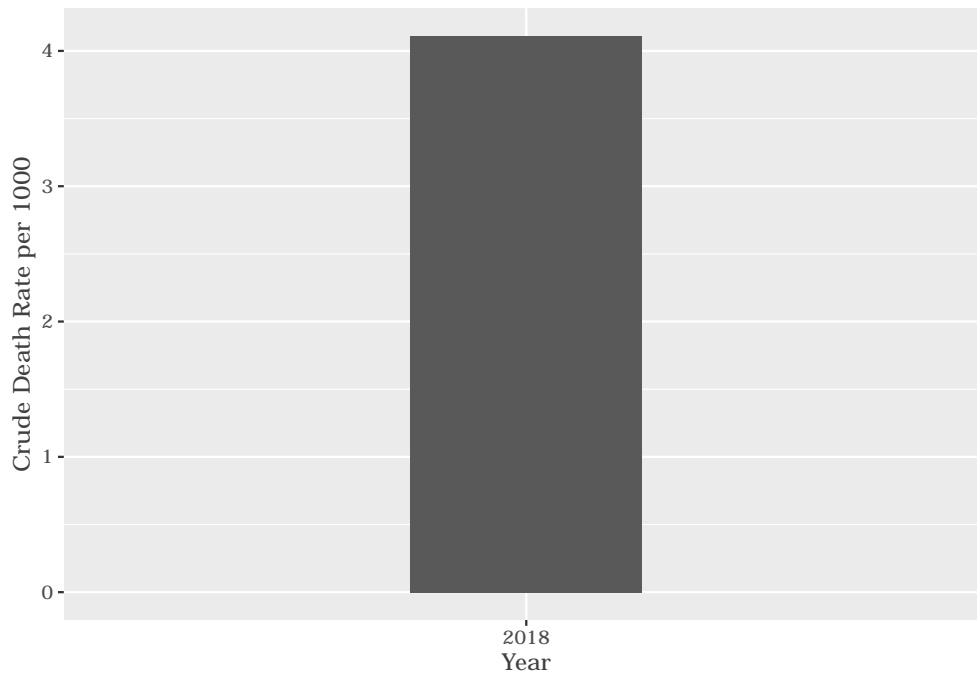
We find the age specific fertility rate by looking at how many women in a certain age group have had babies in a certain year. For example, we can see that in 2018, for the women in the age group 15-19, 27 out of every 1000 gave birth (if there had been over 1000 living in Croquet Lawn B).

Deaths

Below you can see the total number of deaths that occurred in the Croquet Lawn B in 2018.

Category	Count
Male Deaths	0
Female Deaths	3
Total Deaths	3

Below you can see the total number of death that occurred in the Croquet Lawn B in 2018.



The crude death rate is found by looking at how many people died for every 1 000 people living in the population. In 2018, for every 1 000 people in the population of Croquet Lawn B, 4 died.

Migration

Permanent migration patterns

Below you can see how many people have moved into and out of Croquet Lawn B permanently for the year of 2018.

Category	Count
Male In-Migration	0
Female In-Migration	1
Total In-Migration	1

Category	Count
Male Out-Migration	0
Female Out-Migration	4
Total Out-Migration	4