

MRC/WITS-AGINCOURT UNIT STUDY AREA HDSS FACT SHEET

Belfast

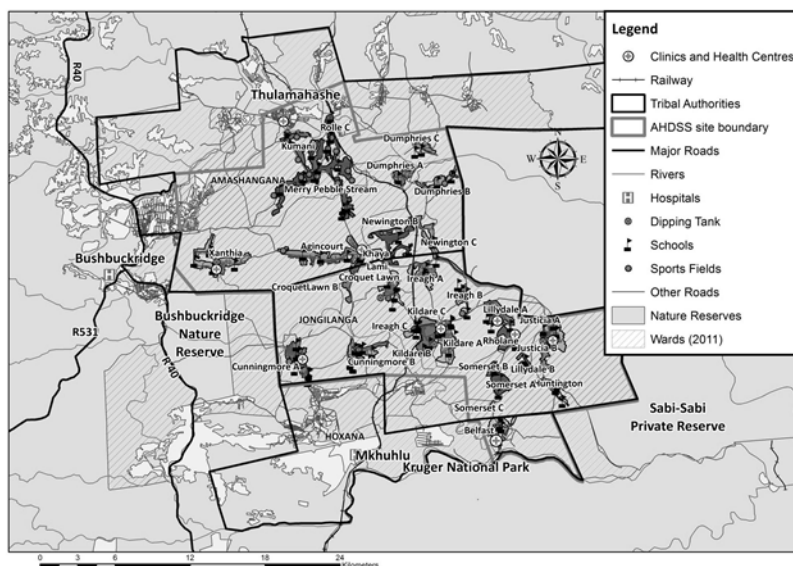
Introduction

This “Fact Sheet” provides basic information on the population and demographics for the Agincourt HDSS study area using data from the 2018 and 2019 annual updates across all villages in the study area. Whenever you use this information, please reference it as being obtained from MRC/Wits Rural Public Health and Health Transitions Research Unit (Agincourt).

Villages in the Agincourt Health and Socio-Demographic Surveillance (HDSS) System study area in 2018/2019 include:

Agincourt, Belfast, Croquet Lawn, Croquet Lawn B, Cunningmore A, Cunningmore B, Dumphries A, Dumphries B, Dumphries C, Huntington, Ireagh A, Ireagh B, Ireagh C, Justicia, Khaya Lami, Kildare A, Kildare B, Kumani, Lillydale A, Lillydale B, Makaringe, MP Stream, Newington B, Newington C, Rolle C, Somerset, Somerset C, and Xanthia.

Where is Belfast village in the MRC/Wits-Agincourt Unit Health and socio-Demographic System (HDSS) study area?



Belfast village population 2019

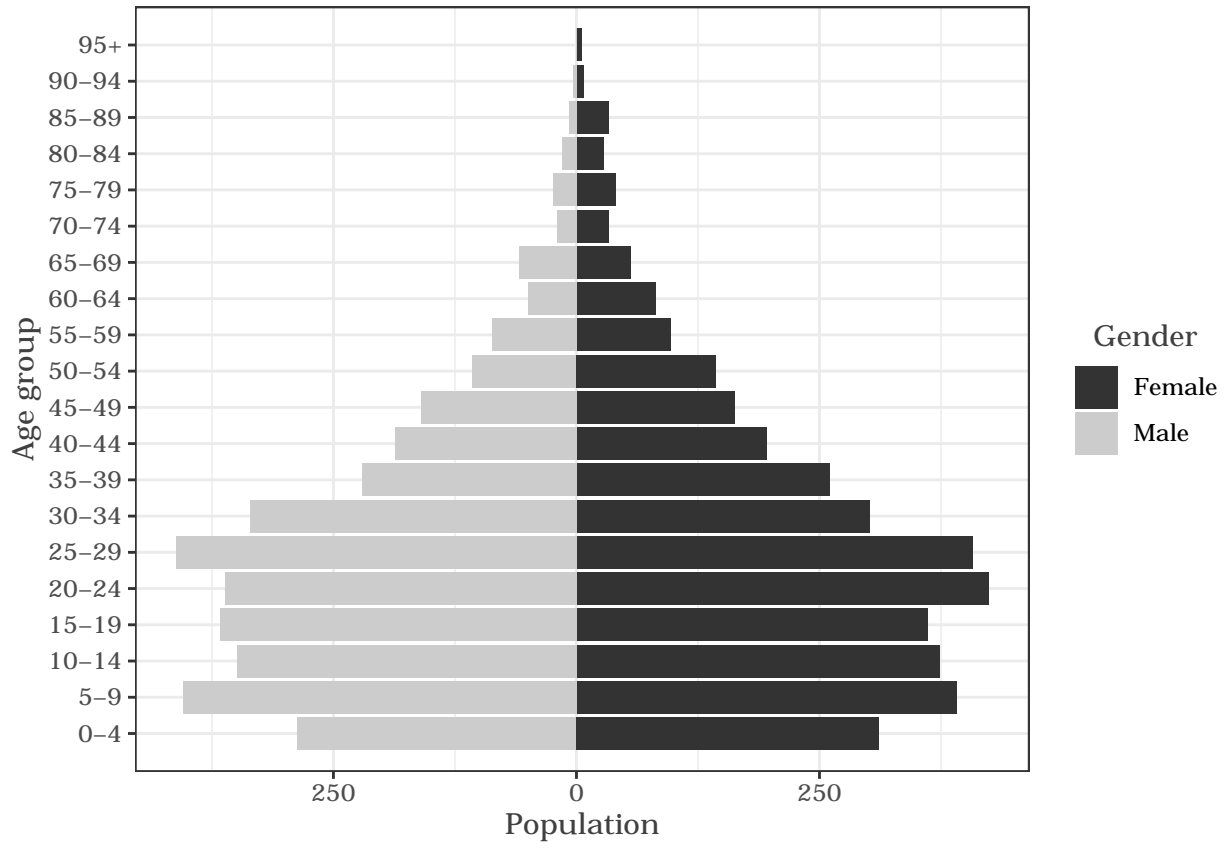
The numbers shown below are calculated according to numbers for the end of June 2019. The numbers are known as mid-year population figures.

Category	Total
Households	1393
Population	7181
Male	3460
Female	3720
Children under 5	599
Children of school-going age (5-19)	2248

Below you can see how many people were living in Belfast of different ages in June 2019.

Age group	Male	Female	Total
0-4	287	311	599
5-9	405	391	796
10-14	349	374	723
15-19	367	362	729
20-24	362	424	786
25-29	412	408	820
30-34	336	302	638
35-39	221	261	482
40-44	187	196	383
45-49	160	163	323
50-54	107	144	251
55-59	87	97	184
60-64	50	82	132
65-69	59	56	115
70-74	20	33	53
75-79	24	41	65
80-84	15	28	43
85-89	8	33	41
90-94	4	8	12
95+	0	6	6

Below you can see the population structure of Belfast for 2019.



Births

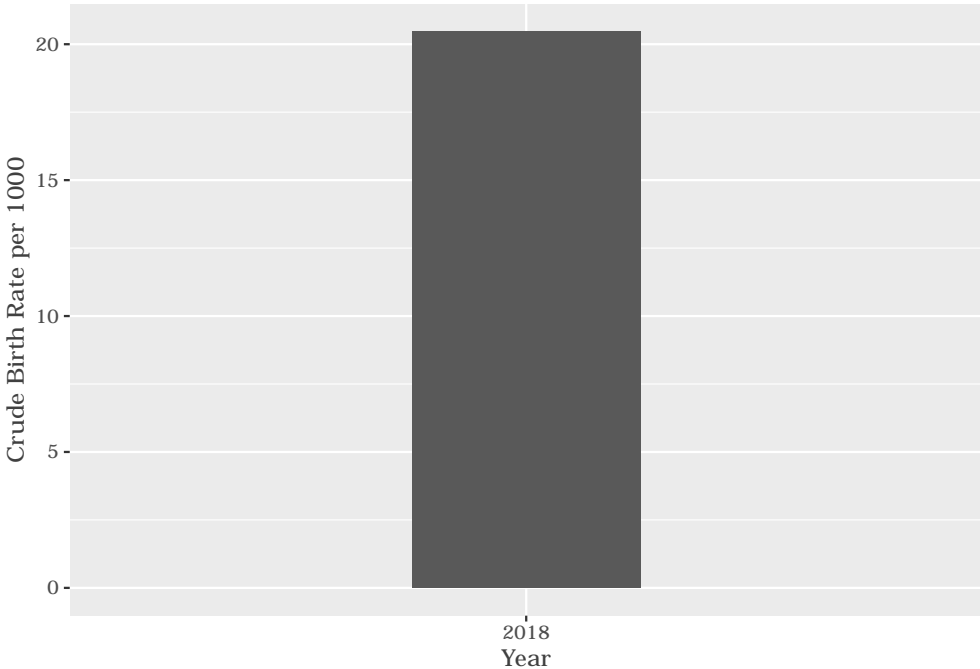
Number of Births by Sex

The number of births recorded in Belfast are shown below. We can only provide data to the end of 2018.

Category	Count
Male Births	66
Female Births	79
Total Births	145

Crude Birth Rate (how many babies born for every one thousand people)

The graph below shows the crude birth rates in Belfast in 2018.



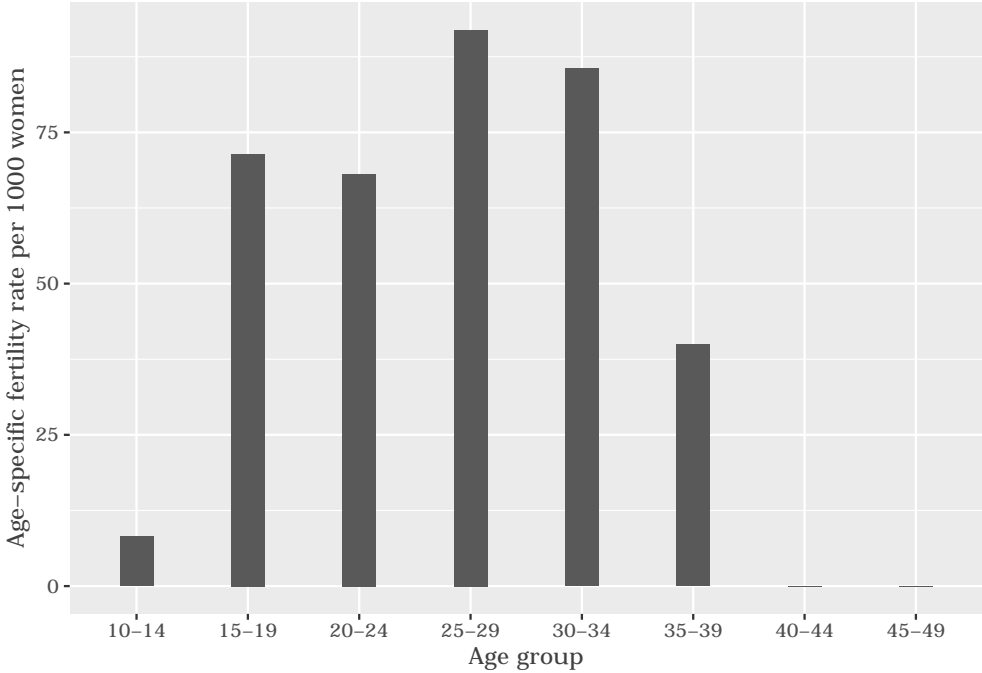
The crude birth rate is found by comparing the number of babies born to the total population. For every 1 000 people (all ages and both male and female) living in Belfast in the year of 2018, 20 babies were born.

Births by Mother's Age and Age Specific Fertility Rates

Research within the MRC/Wits-Agincourt Unit HDSS study area continues to look closely at fertility. You can see the number of babies born to mothers of different ages in the study area in 2018 below.

AgeGroup	ASFR
10-14	8
15-19	71
20-24	68
25-29	91
30-34	85
35-39	40
40-44	0
45-49	0

The age specific fertility rates of Belfast in 2018 are shown below.



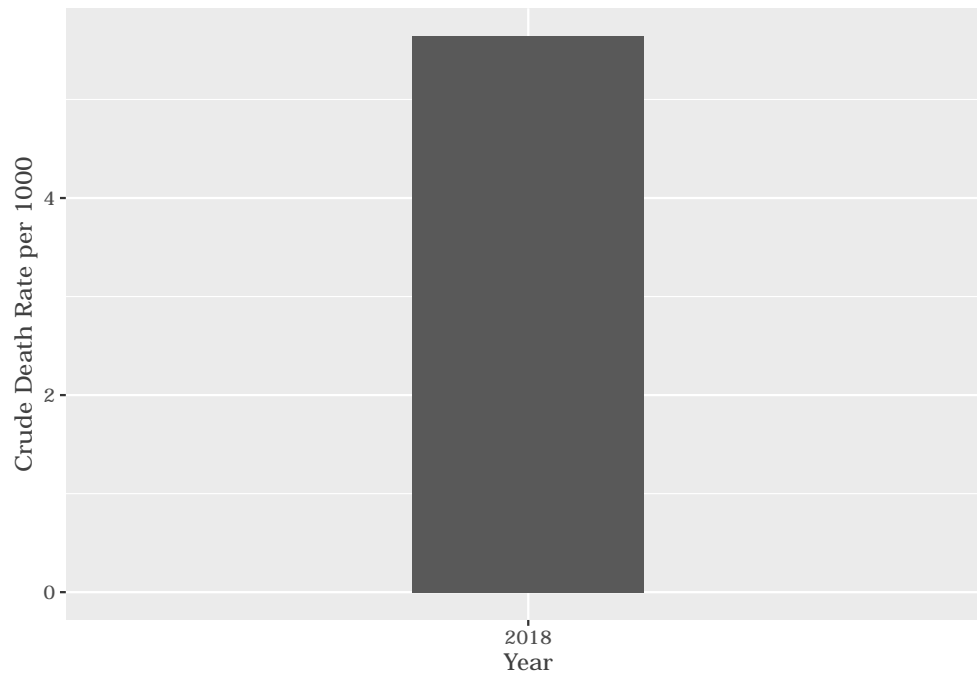
We find the age specific fertility rate by looking at how many women in a certain age group have had babies in a certain year. For example, we can see that in 2018, for the women in the age group 15-19, 71 out of every 1000 gave birth (if there had been over 1000 living in Belfast).

Deaths

Below you can see the total number of deaths that occurred in the Belfast in 2018.

Category	Count
Male Deaths	21
Female Deaths	19
Total Deaths	40

Below you can see the total number of death that occurred in the Belfast in 2018.



The crude death rate is found by looking at how many people died for every 1 000 people living in the population. In 2018, for every 1 000 people in the population of Belfast, 5 died.

Migration

Permanent migration patterns

Below you can see how many people have moved into and out of Belfast permanently for the year of 2018.

Category	Count
Male In-Migration	47
Female In-Migration	84
Total In-Migration	131

Category	Count
Male Out-Migration	49
Female Out-Migration	61
Total Out-Migration	110