

MRC/WITS-AGINCOURT UNIT STUDY AREA HDSS FACT SHEET

Agincourt Health and Demographic Surveillance Site

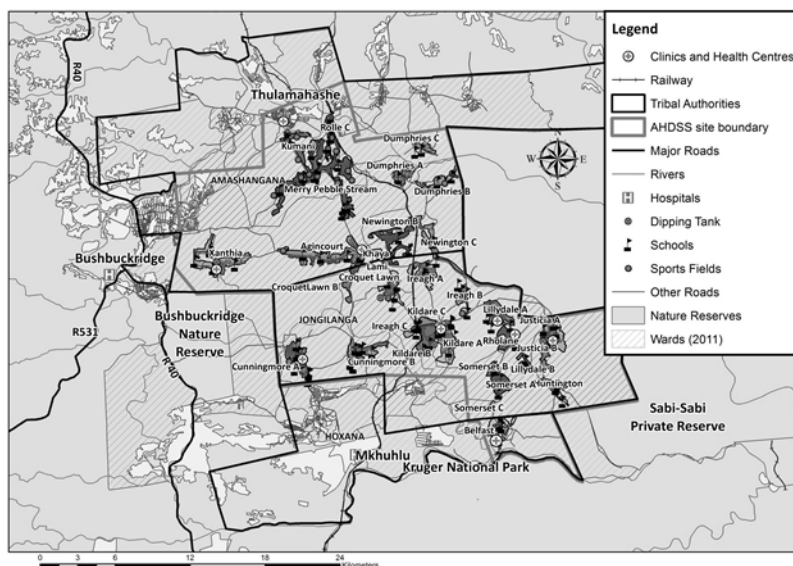
Introduction

This “Fact Sheet” provides basic information on the population and demographics for the Agincourt HDSS study area using data from the 2018 and 2019 annual updates across all villages in the study area. Whenever you use this information, please reference it as being obtained from MRC/Wits Rural Public Health and Health Transitions Research Unit (Agincourt).

Villages in the Agincourt Health and Socio-Demographic Surveillance (HDSS) System study area in 2018/2019 include:

Agincourt, Belfast, Croquet Lawn, Croquet Lawn B, Cunningsmore A, Cunningsmore B, Dumphries A, Dumphries B, Dumphries C, Huntington, Ireagh A, Ireagh B, Ireagh C, Justicia, Khaya Lami, Kildare A, Kildare B, Kumani, Lillydale A, Lillydale B, Makaringe, MP Stream, Newington B, Newington C, Rolle C, Somerset, Somerset C, and Xanthia.

Where is Agincourt Health and Demographic Surveillance Site village in the MRC/Wits-Agincourt Unit Health and socio-Demographic System (HDSS) study area?



Agincourt Health and Demographic Surveillance Site village population 2019

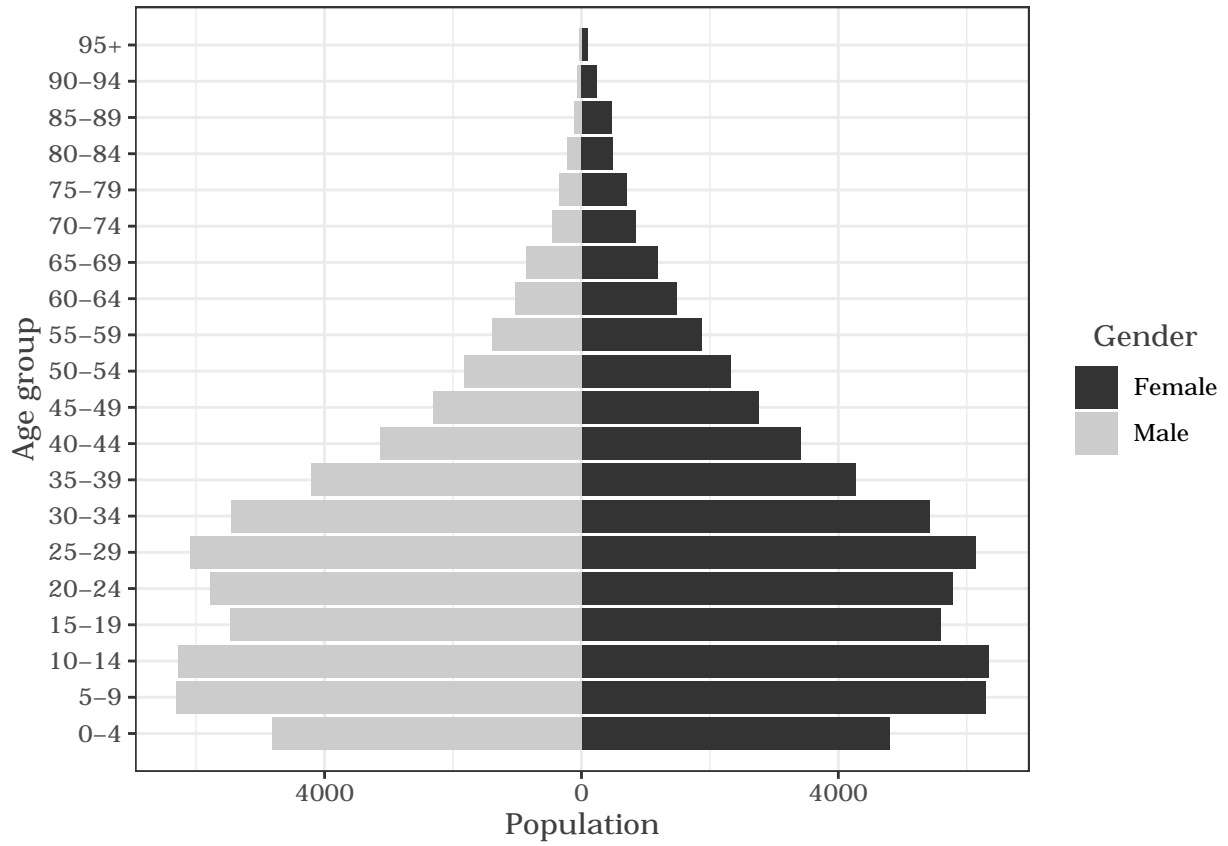
The numbers shown below are calculated according to numbers for the end of June 2019. The numbers are known as mid-year population figures.

Category	Total
Households	23440
Population	116828
Male	56231
Female	60591
Children under 5	9633
Children of school-going age (5-19)	36298

Below you can see how many people were living in Agincourt Health and Demographic Surveillance Site of different ages in June 2019.

Age group	Male	Female	Total
0-4	4821	4806	9633
5-9	6314	6302	12616
10-14	6279	6340	12619
15-19	5466	5597	11063
20-24	5787	5788	11575
25-29	6090	6137	12227
30-34	5463	5420	10883
35-39	4208	4267	8475
40-44	3134	3423	6557
45-49	2313	2766	5079
50-54	1831	2330	4161
55-59	1388	1880	3268
60-64	1038	1488	2526
65-69	867	1187	2054
70-74	454	843	1297
75-79	355	705	1060
80-84	218	490	708
85-89	111	481	592
90-94	62	238	300
95+	32	103	135

Below you can see the population structure of Agincourt Health and Demographic Surveillance Site for 2019.



Births

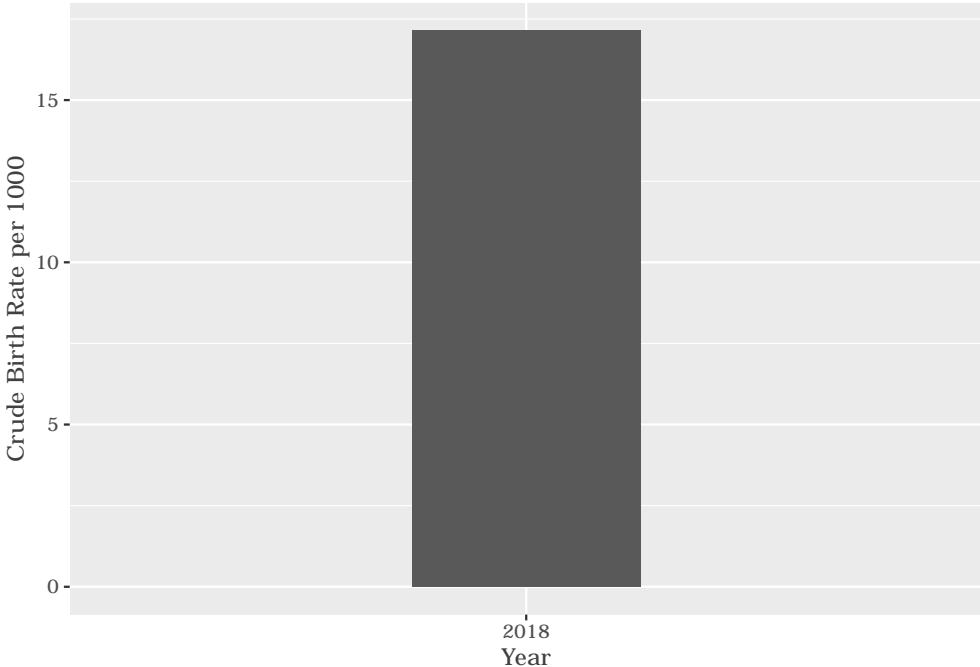
Number of Births by Sex

The number of births recorded in Agincourt Health and Demographic Surveillance Site are shown below. We can only provide data to the end of 2018.

Category	Count
Male Births	955
Female Births	1038
Total Births	1993

Crude Birth Rate (how many babies born for every one thousand people)

The graph below shows the crude birth rates in Agincourt Health and Demographic Surveillance Site in 2018.



The crude birth rate is found by comparing the number of babies born to the total population. For every 1 000 people (all ages and both male and female) living in Agincourt Health and Demographic Surveillance Site in the year of 2018, 17 babies were born.

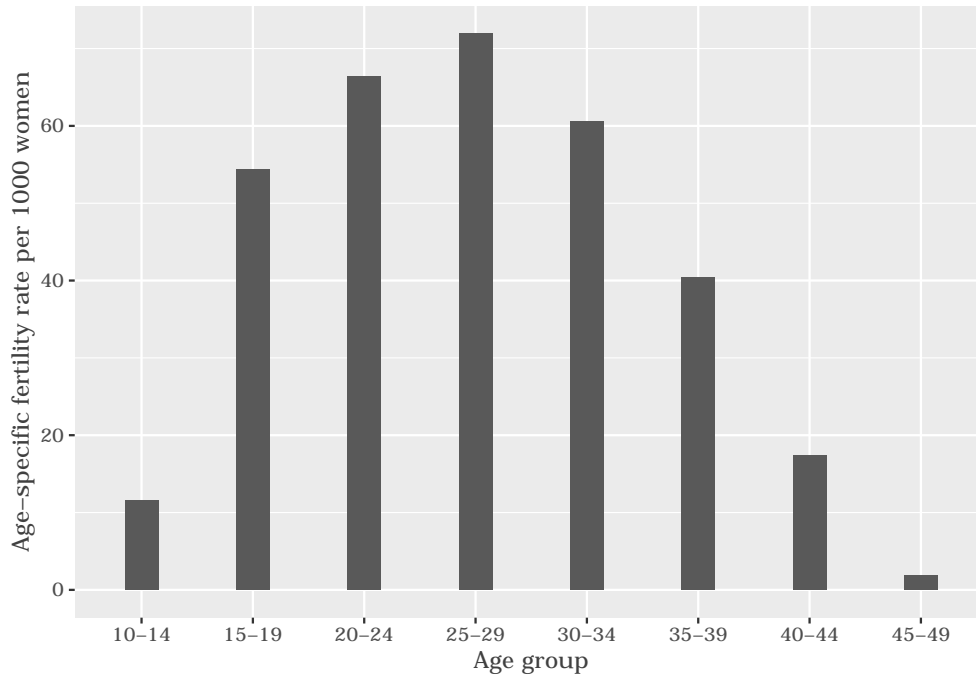
Births by Mother’s Age and Age Specific Fertility Rates

Research within the MRC/Wits-Agincourt Unit HDSS study area continues to look closely at fertility. You can see the number of babies born to mothers of different ages in the study area in 2018 below.

AgeGroup	ASFR
10-14	11
15-19	54
20-24	66
25-29	71
30-34	60

AgeGroup	ASFR
35-39	40
40-44	17
45-49	1

The age specific fertility rates of Agincourt Health and Demographic Surveillance Site in 2018 are shown below.



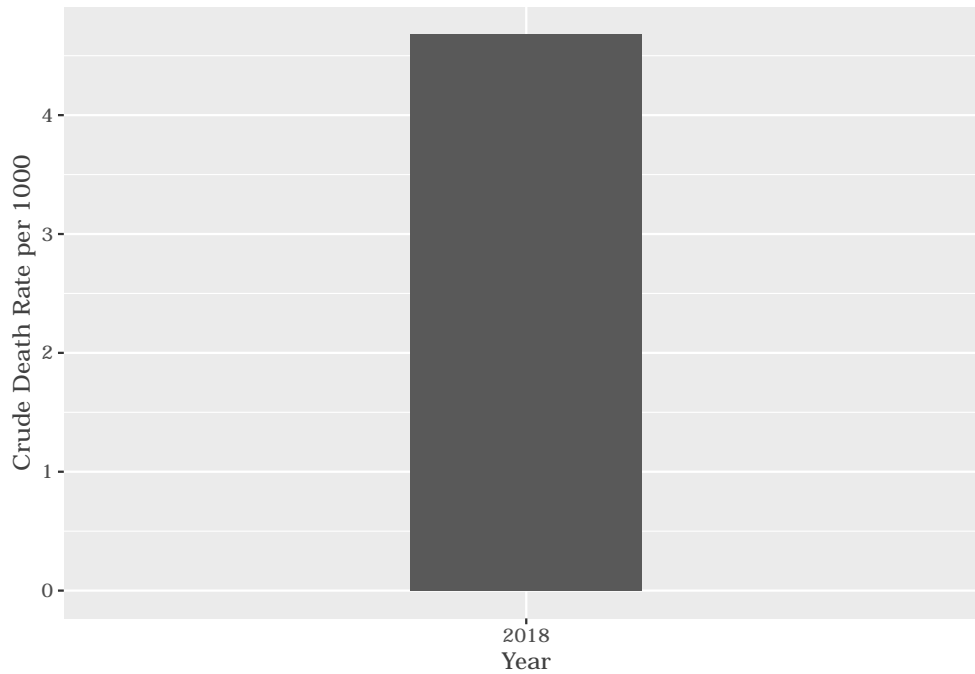
We find the age specific fertility rate by looking at how many women in a certain age group have had babies in a certain year. For example, we can see that in 2018, for the women in the age group 15-19, 54 out of every 1000 gave birth (if there had been over 1000 living in Agincourt Health and Demographic Surveillance Site).

Deaths

Below you can see the total number of deaths that occurred in the Agincourt Health and Demographic Surveillance Site in 2018.

Category	Count
Male Deaths	285
Female Deaths	259
Total Deaths	544

Below you can see the total number of death that occurred in the Agincourt Health and Demographic Surveillance Site in 2018.



The crude death rate is found by looking at how many people died for every 1 000 people living in the population. In 2018, for every 1 000 people in the population of Agincourt Health and Demographic Surveillance Site, 4 died.

Migration

Permanent migration patterns

Below you can see how many people have moved into and out of Agincourt Health and Demographic Surveillance Site permanently for the year of 2018.

Category	Count
Male In-Migration	586
Female In-Migration	860
Total In-Migration	1446

Category	Count
Male Out-Migration	722
Female Out-Migration	1043
Total Out-Migration	1765