

MRC/WITS-AGINCOURT UNIT STUDY AREA HDSS FACT SHEET

Agincourt

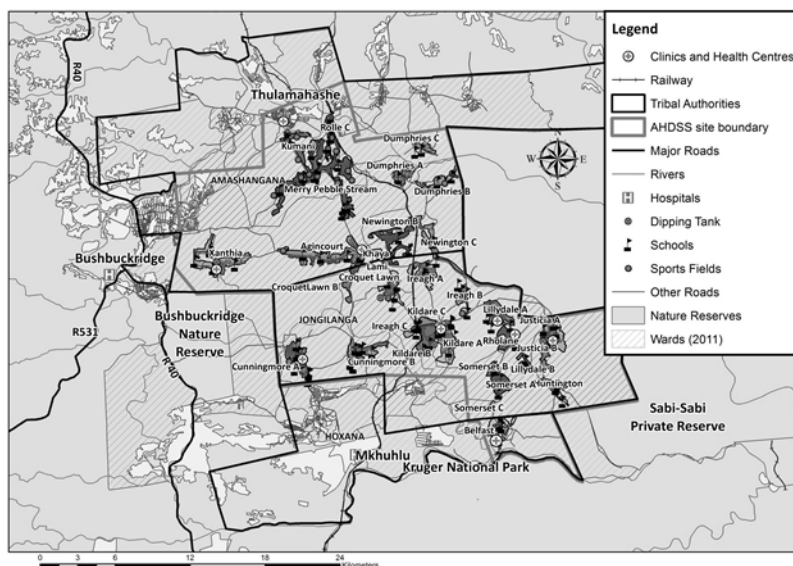
Introduction

This “Fact Sheet” provides basic information on the population and demographics for the Agincourt HDSS study area using data from the 2018 and 2019 annual updates across all villages in the study area. Whenever you use this information, please reference it as being obtained from MRC/Wits Rural Public Health and Health Transitions Research Unit (Agincourt).

Villages in the Agincourt Health and Socio-Demographic Surveillance (HDSS) System study area in 2018/2019 include:

Agincourt, Belfast, Croquet Lawn, Croquet Lawn B, Cunningmore A, Cunningmore B, Dumphries A, Dumphries B, Dumphries C, Huntington, Ireagh A, Ireagh B, Ireagh C, Justicia, Khaya Lami, Kildare A, Kildare B, Kumani, Lillydale A, Lillydale B, Makaringe, MP Stream, Newington B, Newington C, Rolle C, Somerset, Somerset C, and Xanthia.

Where is Agincourt village in the MRC/Wits-Agincourt Unit Health and socio-Demographic System (HDSS) study area?



Agincourt village population 2019

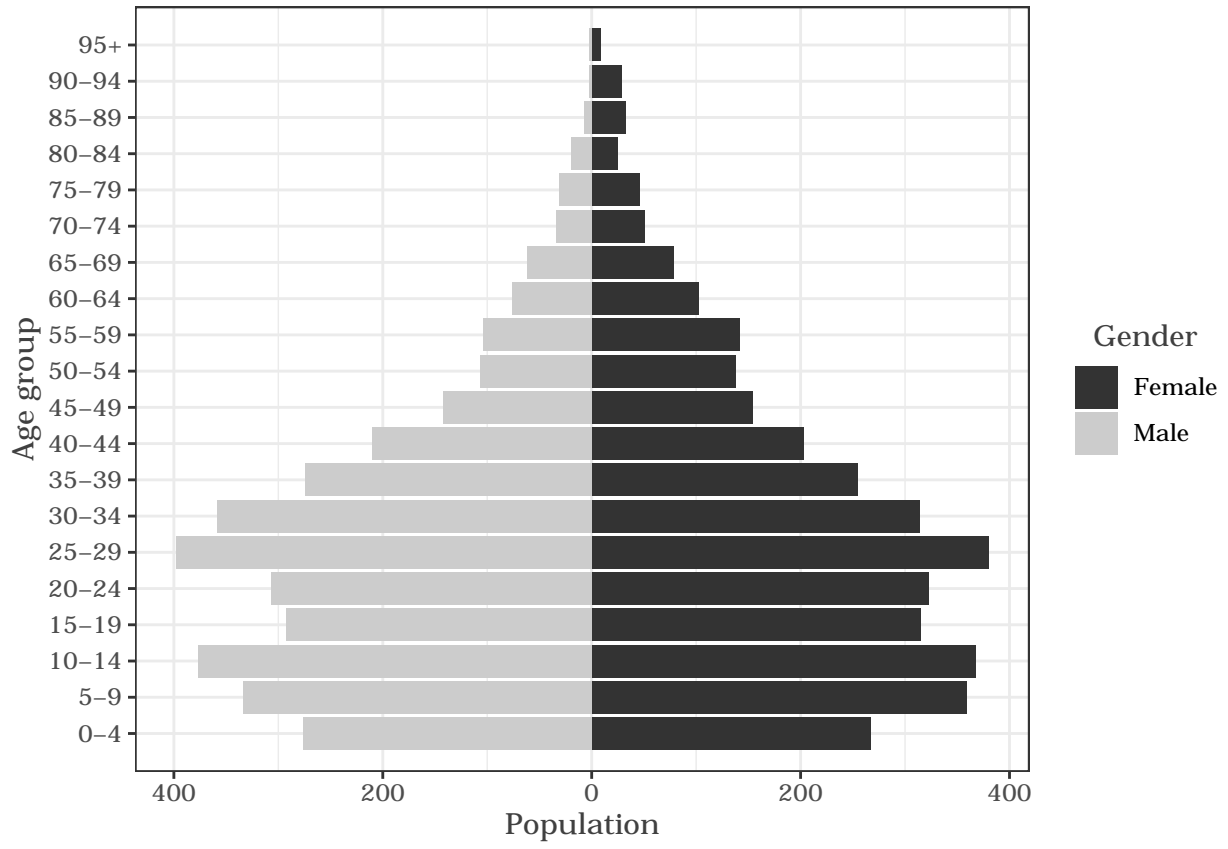
The numbers shown below are calculated according to numbers for the end of June 2019. The numbers are known as mid-year population figures.

Category	Total
Households	1293
Population	7007
Male	3414
Female	3593
Children under 5	543
Children of school-going age (5-19)	2045

Below you can see how many people were living in Agincourt of different ages in June 2019.

Age group	Male	Female	Total
0-4	276	267	543
5-9	334	359	693
10-14	377	368	745
15-19	292	315	607
20-24	307	323	630
25-29	398	380	778
30-34	359	314	673
35-39	274	255	529
40-44	210	203	413
45-49	142	154	296
50-54	107	138	245
55-59	104	142	246
60-64	76	103	179
65-69	62	79	141
70-74	34	51	85
75-79	31	46	77
80-84	20	25	45
85-89	7	33	40
90-94	2	29	31
95+	2	9	11

Below you can see the population structure of Agincourt for 2019.



Births

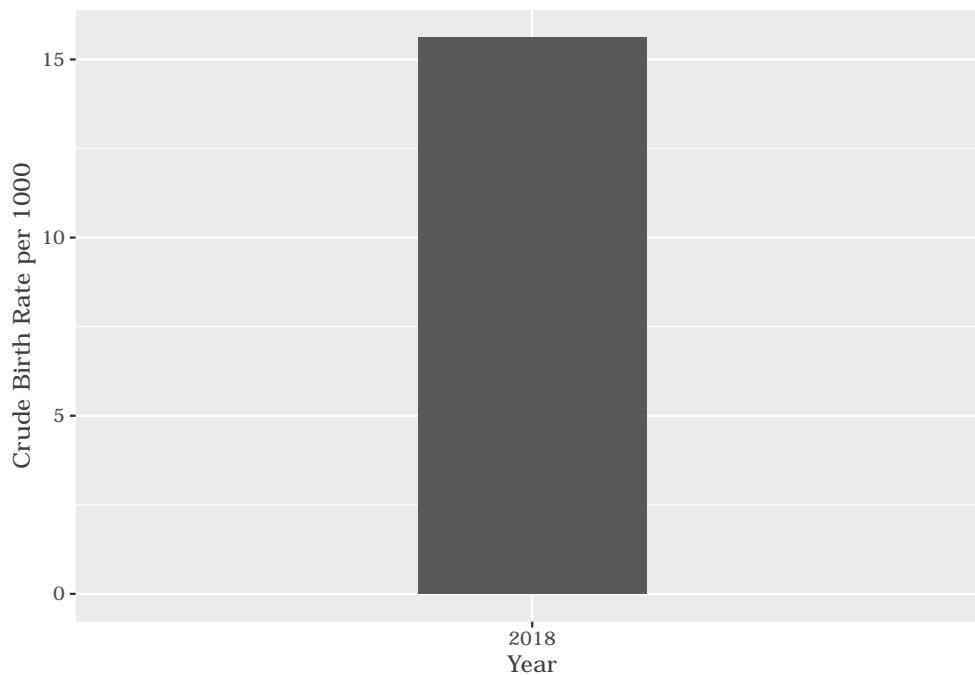
Number of Births by Sex

The number of births recorded in Agincourt are shown below. We can only provide data to the end of 2018.

Category	Count
Male Births	58
Female Births	51
Total Births	109

Crude Birth Rate (how many babies born for every one thousand people)

The graph below shows the crude birth rates in Agincourt in 2018.



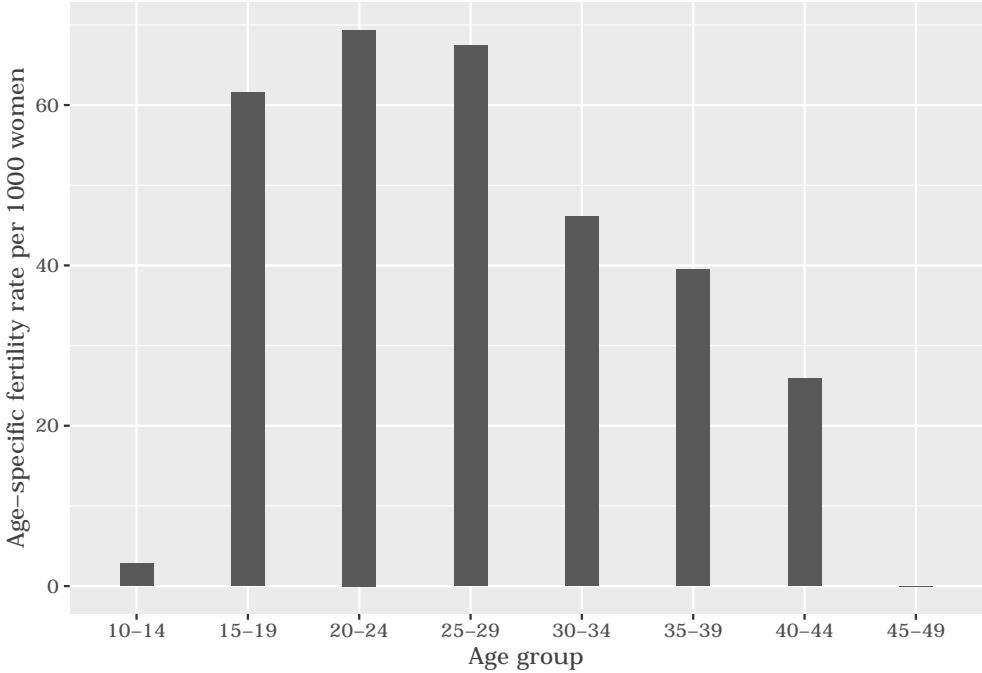
The crude birth rate is found by comparing the number of babies born to the total population. For every 1 000 people (all ages and both male and female) living in Agincourt in the year of 2018, 15 babies were born.

Births by Mother's Age and Age Specific Fertility Rates

Research within the MRC/Wits-Agincourt Unit HDSS study area continues to look closely at fertility. You can see the number of babies born to mothers of different ages in the study area in 2018 below.

AgeGroup	ASFR
10-14	2
15-19	61
20-24	69
25-29	67
30-34	46
35-39	39
40-44	25
45-49	0

The age specific fertility rates of Agincourt in 2018 are shown below.



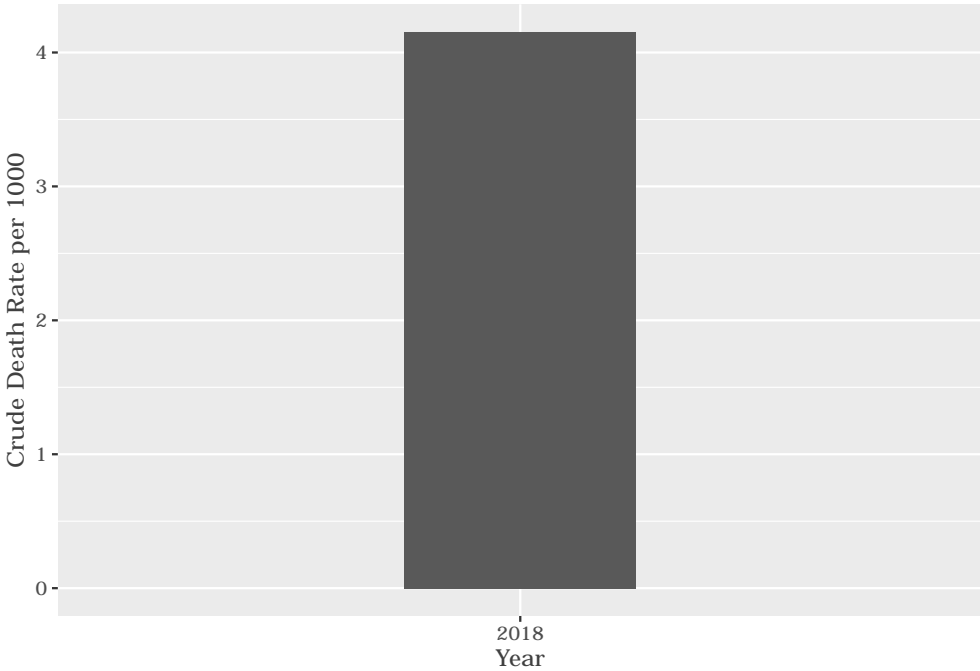
We find the age specific fertility rate by looking at how many women in a certain age group have had babies in a certain year. For example, we can see that in 2018, for the women in the age group 15-19, 61 out of every 1000 gave birth (if there had been over 1000 living in Agincourt).

Deaths

Below you can see the total number of deaths that occurred in the Agincourt in 2018.

Category	Count
Male Deaths	19
Female Deaths	10
Total Deaths	29

Below you can see the total number of death that occurred in the Agincourt in 2018.



The crude death rate is found by looking at how many people died for every 1 000 people living in the population. In 2018, for every 1 000 people in the population of Agincourt, 4 died.

Migration

Permanent migration patterns

Below you can see how many people have moved into and out of Agincourt permanently for the year of 2018.

Category	Count
Male In-Migration	28
Female In-Migration	47
Total In-Migration	75

Category	Count
Male Out-Migration	33
Female Out-Migration	57
Total Out-Migration	90