

MRC/WITS-AGINCOURT UNIT HDSS STUDY AREA

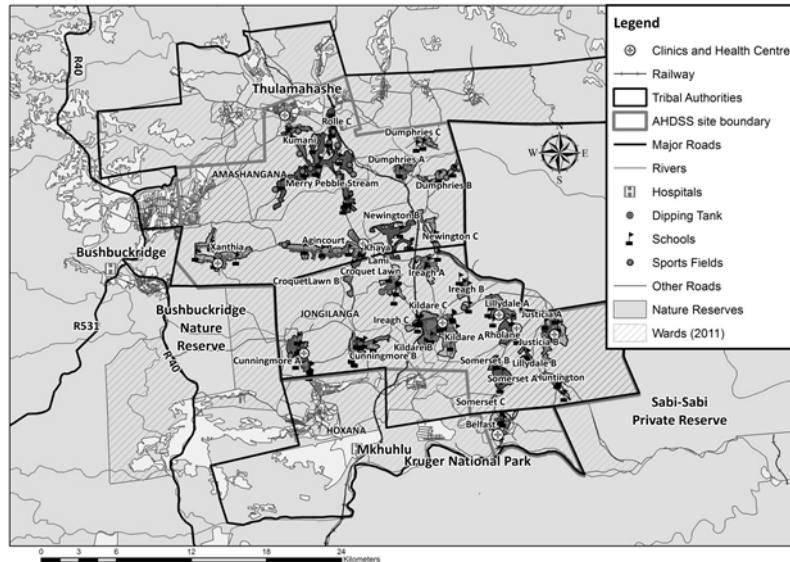
FACT SHEET 2019

This “Fact Sheet” provides basic information on the population and demographics for the MRC/Wits-Agincourt Unit HDSS study area using data from the 2017 and 2018 annual updates across all villages in the study area. Whenever you use this information, please reference it as being obtained from MRC/Wits Rural Public Health and Health Transitions Research Unit (Agincourt).

Villages in the Agincourt Health and Socio-Demographic Surveillance (HDSS) System study area in 2017/18 include:

Agincourt, Belfast, Croquet Lawn, Croquet Lawn B, Cunningmore A, Cunningmore B, Dumphries A, Dumphries B, Dumphries C, Huntington, Ireagh A, Ireagh B, Ireagh C, Justicia, Khaya Lami, Kildare A, Kildare B, Kumani, Lillydale A, Lillydale B, Makaringe, MP Stream, Newington B, Newington C, Rolle C, Somerset, Somerset C, and Xanthia.

MRC/Wits-Agincourt Unit Health and socio-Demographic System (HDSS) study area



MRC/Wits-Agincourt Unit HDSS Study area Population 2018

The numbers shown below are calculated according to numbers for the end of June 2018. The numbers are known as mid-year population figures.

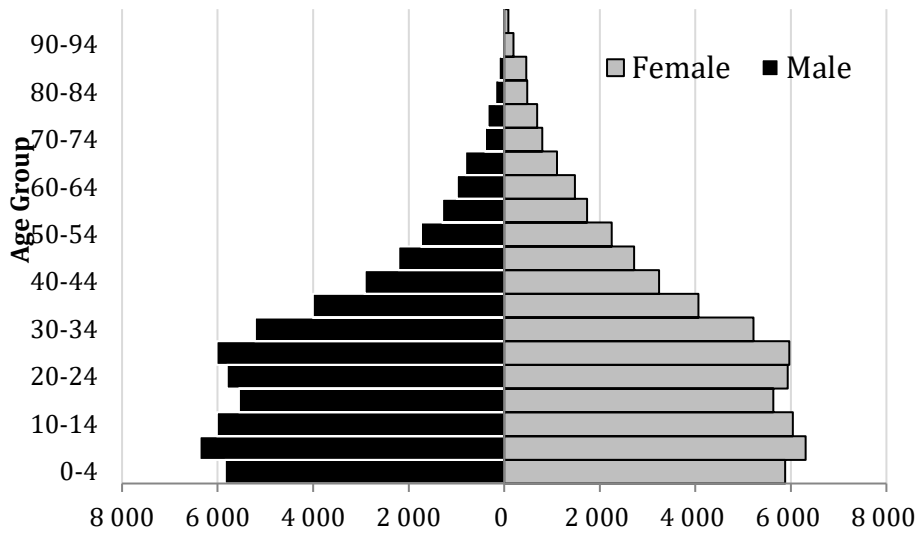
Mid-year Figures in the MRC/Wits-Agincourt Unit HDSS study area, 2018	
Households	22,716
Population	116,247
Male	55,961
Female	60,280
Children under 5	11,724
Children of school-going age (5-19)	35,928

Below you can see how many people were living in the MRC/Wits-Agincourt Unit HDSS study area of different ages in June 2018:

Mid-Year Population of the MRC/Wits-Agincourt Unit study area by age group June 2018			
Age group	Male	Female	Total
0-4	5846	5878	11730
5-9	6378	6310	12688
10-14	6015	6040	12055
15-19	5553	5632	11185
20-24	5807	5933	11740
25-29	6021	5967	11988
30-34	5216	5217	10433
35-39	4008	4063	8071
40-44	2923	3239	6162
45-49	2219	2717	4936
50-54	1740	2251	3991
55-59	1302	1736	3038
60-64	992	1479	2471
65-69	816	1105	1921
70-74	400	797	1197
75-79	350	690	1040
80-84	186	481	667
85-89	114	464	578
90-94	43	195	238
95+	32	86	118
TOTAL	55,961	60,280	116,247

Below you can see the population structure of the MRC/Wits-Agincourt Unit HDSS study area for 2018.

Site_Current Population Pyramid, 2018



Births

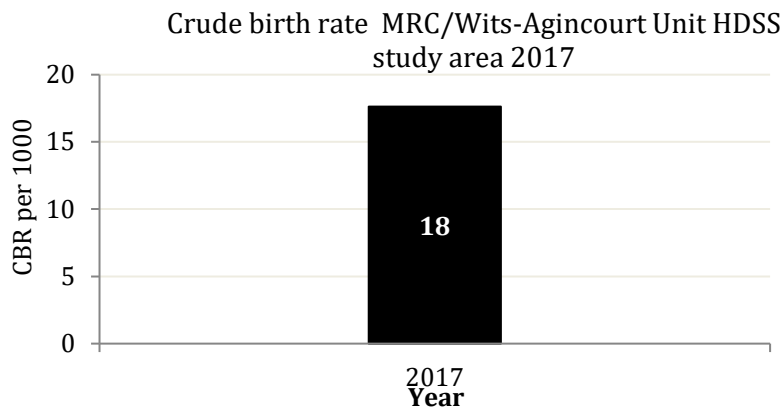
Number of Births by Sex of baby

The number of births recorded in the MRC/Wits-Agincourt Unit HDSS study area are shown below. We can only provide data to the end of 2017.

Births by Sex in the MRC/Wits- Agincourt Unit HDSS study area, 2017	
Male Births	675
Female Births	675
Total Births	1350

Crude Birth Rate (how many babies born for every one thousand people)

The graph below shows the crude birth rates in the MRC/Wits-Agincourt Unit HDSS study area in 2017.



The crude birth rate is found by comparing the number of babies born to the total population. For every 1 000 people (all ages and both male and female) living in the MRC/Wits-Agincourt HDSS study area in the year of 2017, 18 babies were born.

Births by Mother's Age and Age Specific Fertility Rates

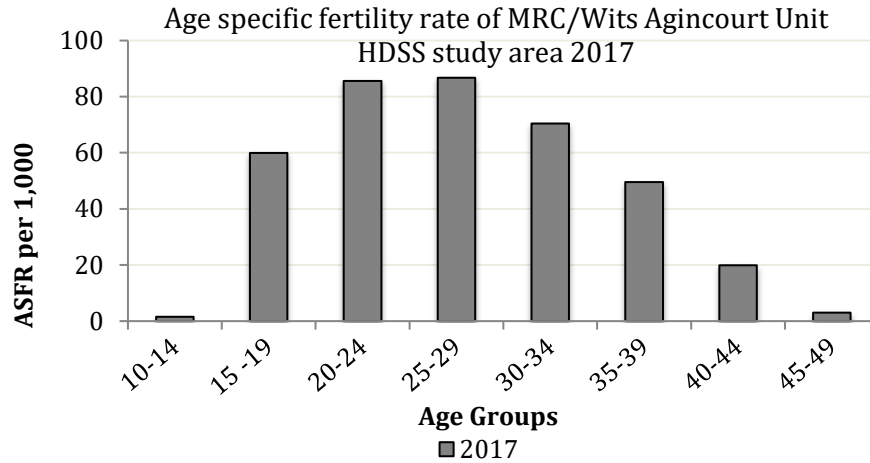
Research within the MRC/Wits-Agincourt Unit HDSS study area continues to look closely at fertility. You can see the number of babies born to mothers of different ages in the study area in 2017 below.

Age Groups	2017
10-14	9
15 -19	351
20-24	520
25-29	530
30-34	361
35-39	200
40-44	63
45-49	8
Total Births	2042

The age fertility rates MRC/Wits-HDSS study are shown

Deaths by Sex in the MRC/Wits-Agincourt Unit HDSS study area, 2017	
Male Deaths	284
Female Deaths	258
Total Deaths	542

specific of the Agincourt Unit area in 2017 below.

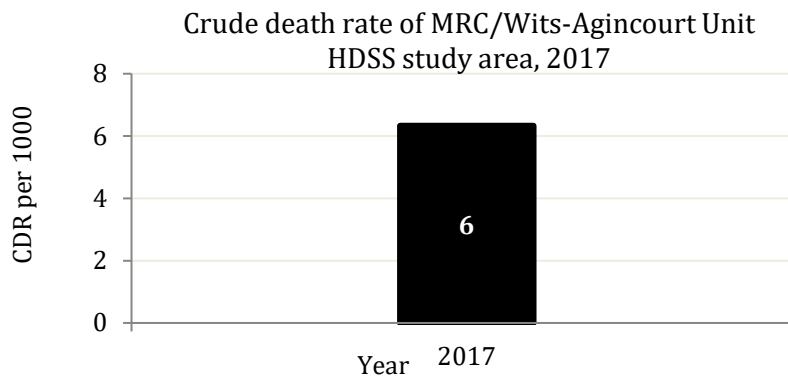


We find the age specific fertility rate by looking at how many women in a certain age group have had babies in a certain year. For example, we can see that in 2017, for the women in the age group 15-19, 60 out of every 1000 gave birth (if there had been over 1000 living in the MRC/Wits -Agincourt Unit HDSS study area).

Deaths

Below you can see the total number of deaths that occurred in the MRC/Wits-Agincourt Unit HDSS study area in 2017.

Below you can see the total number of death that occurred in the MRC/Wits-Agincourt Unit HDSS study area in 2017.



The crude death rate is found by looking at how many people died for every 1 000 people living in the population. In 2017, for every 1 000 people in the population of the MRC/Wits-Agincourt Unit HDSS study area, 6 died.

MIGRATION

Permanent migration patterns

Below you can see how many people have moved into and out of the Agincourt HDSS permanently for the year of 2017.

Male In-Migrants	1231
Female In-Migrants	1818
Total In-migrants	3049

Male Out-Migrants	1904
Female Out-Migrants	2629
Total Out-Migrants	4533

