

## Creating a ODBC connection to the ADSS 1:10 Dataset

### Introduction:

Creating an ODBC Connection to the ADSS 1:10 Dataset (OneInTenDataset.mdb) will be able to directly access the data in an analytical package capable of ODBC connections like STATA. To create an ODBC connection you must first create a Data Source Name (dsn). This tutorial will walk you through creating the DSN for the Access database version of the ADSS-SD and then demonstrate the ODBC connection in STATA.

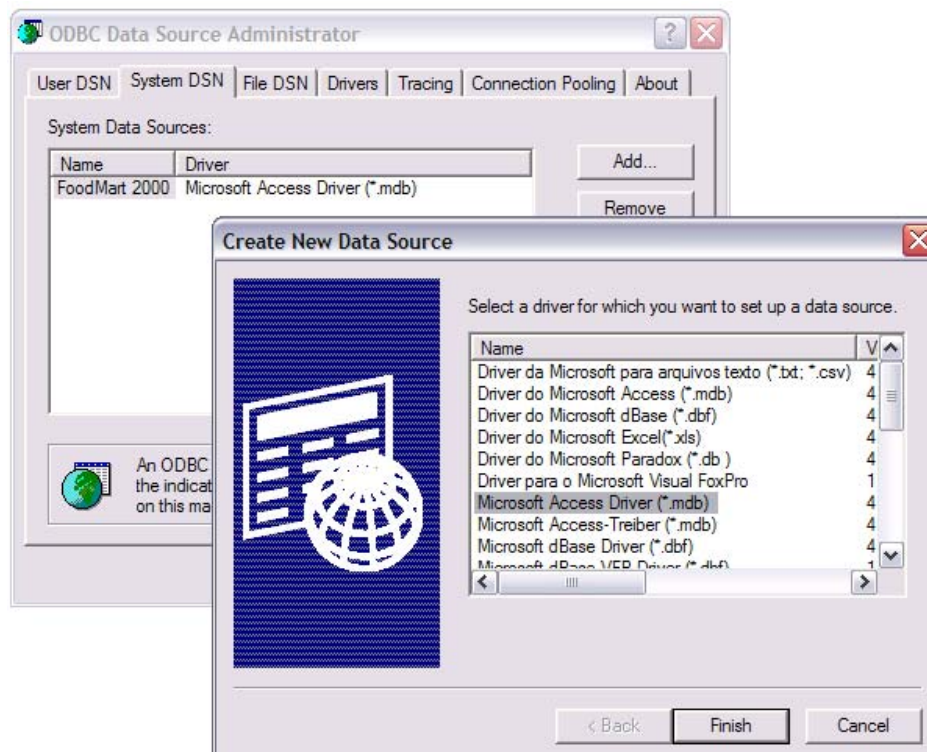
### Create a DSN:

- To create a DSN go to START>Control panel> Administrative tools, or if your control panel is in category view >Performance and Maintenance>Administrative tools. Click the "Data Source" icon to open the ODBC Data Source Administrator dialog box.



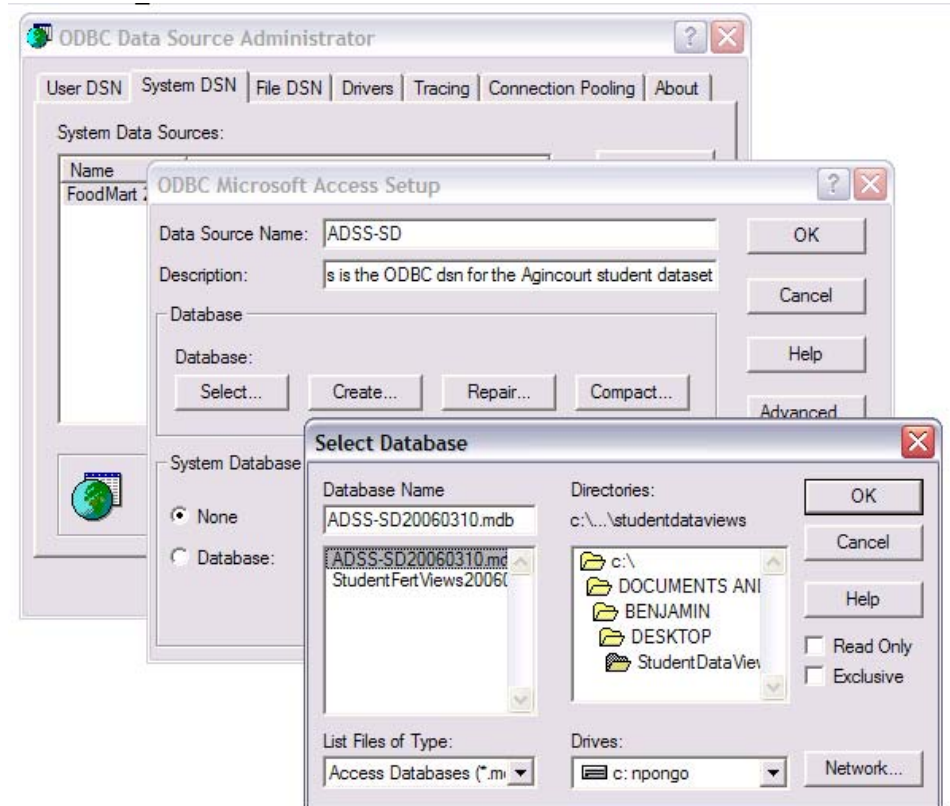
Data Sources (ODBC).lnk

- In the ODBC Data Source Administrator dialog box select the System DSN tab at the top of the dialog box. Then click the "Add..." button.
- In the Create New Data Source dialog select the "Microsoft Access Driver (\*.mdb)" driver and click the "Finish" button.

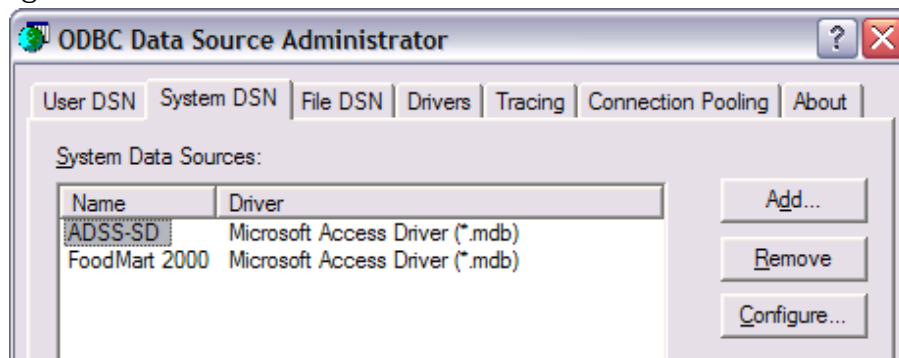


- Next the ODBC Microsoft Access Setup Dialog will open. In the “Data Source Name:” textbox, type in a name of your choosing. In the “Description:” textbox, type the description of DSN (optional).

- Then in the “Database” group box select the “Select...” button. In the Select Database dialog browse to the location where the OneInTenDataset.mdb is saved and select it, then click the “OK” button on the Select Database dialog. Click the “OK” button on the ODBC Microsoft Access Setup dialog.

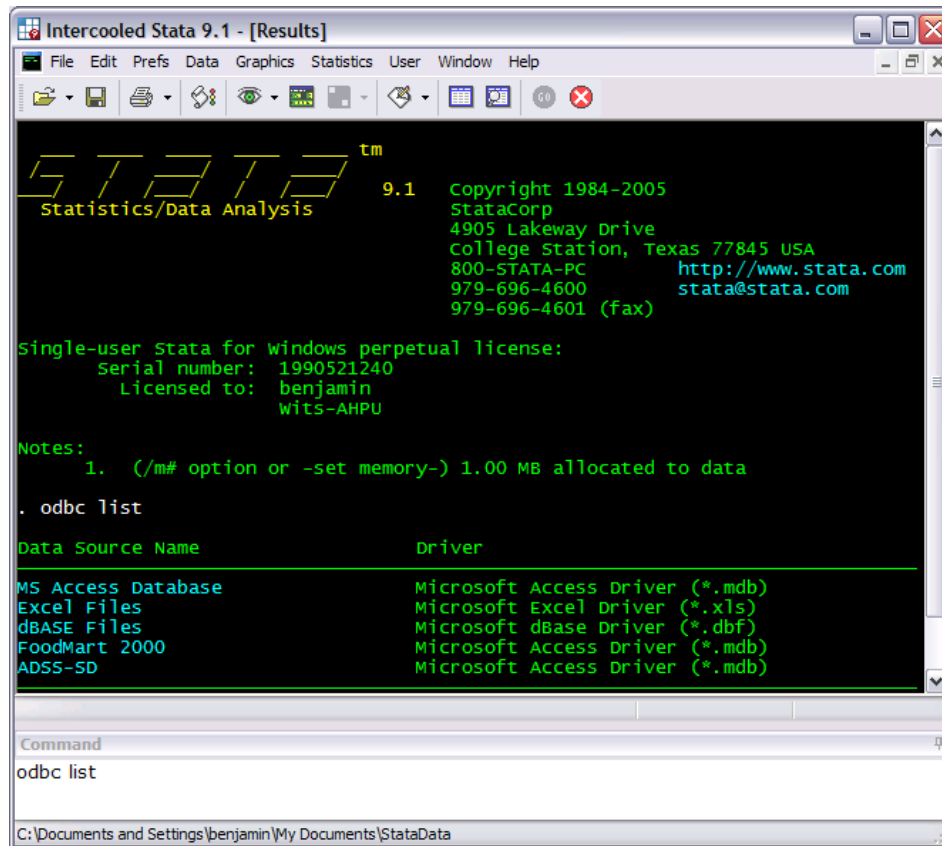


- Your new DSN should now appear in the ODBC Data Source Administrator dialog under the Systems DSN Tab. System dsn are available to all uses of the computer. You can also connect to SQL server database by selecting the SQL driver from the Create New Data Source dialog.



## Making an ODBC connection within STATA:

- To connect to the OnelnTenDataset.mdb with your newly created DSN through STATA open STATA. In the command window type "odbc list". This lists available



```

Intercooled Stata 9.1 - [Results]
File Edit Prefs Data Graphics Statistics User Window Help
-----
STATA 9.1 Copyright 1984-2005
Statistics/Data Analysis StataCorp
4905 Lakeway Drive
College Station, Texas 77845 USA
800-STATA-PC http://www.stata.com
979-696-4600 stata@stata.com
979-696-4601 (fax)

Single-user Stata for windows perpetual license:
  Serial number: 1990521240
  Licensed to: benjamin
             wits-AHPU

Notes:
  1. (/m# option or -set memory-) 1.00 MB allocated to data

. odbc list

Data Source Name      Driver
-----
MS Access Database   Microsoft Access Driver (*.mdb)
Excel Files           Microsoft Excel Driver (*.xls)
dBASE Files           Microsoft dBase Driver (*.dbf)
FoodMart 2000        Microsoft Access Driver (*.mdb)
ADSS-SD               Microsoft Access Driver (*.mdb)

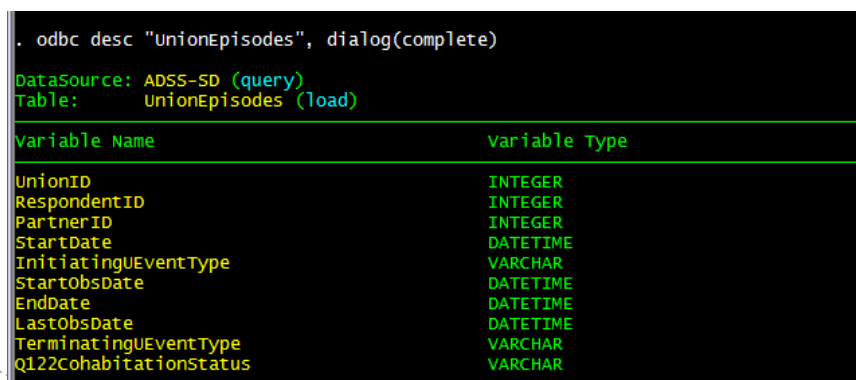
Command
-----
odbc list

C:\Documents and Settings\benjamin\My Documents\StataData

```

DSNs. You should see you newly create OnelnTenDataset dsn in blue hyper-text. Click on it. This will open the connection to the ADSS-SD database

- You will now have a list of tables and views in blue hyper-text. Clicking on one will return the variable list with blue hyper-text at the top that allows you to "load" or "query" the table or view.



```

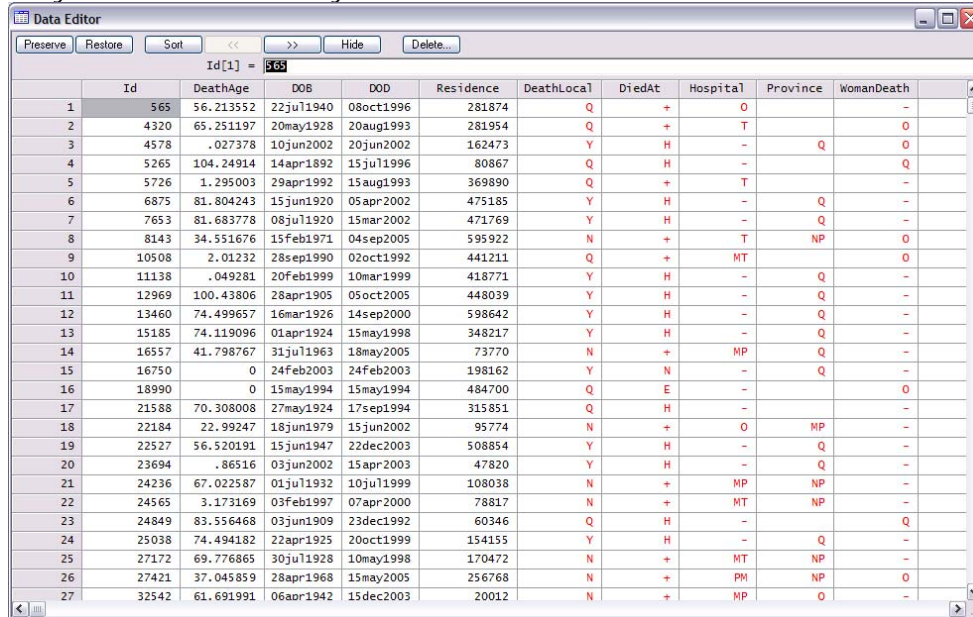
. odbc desc "UnionEpisodes", dialog(complete)

DataSource: ADSS-SD (query)
Table:      UnionEpisodes (load)

Variable Name      Variable Type
-----
UnionID            INTEGER
RespondentID      INTEGER
PartnerID         INTEGER
StartDate          DATETIME
InitiatingEventType VARCHAR
StartObsDate      DATETIME
EndDate           DATETIME
LastObsDate       DATETIME
TerminatingEventType VARCHAR
Q122CohabitationStatus VARCHAR

```

- Clicking the hyper-text "load" will load the table into STATA where you can start your statistical analysis.



	Id	DeathAge	DOB	DOD	Residence	DeathLocal	DiedAt	Hospital	Province	WomanDeath
1	565	56.213552	22jul1940	08oct1996	281874	Q	+	O		-
2	4320	65.251197	20may1928	20aug1993	281954	Q	+	T		O
3	4578	.027378	10jun2002	20jun2002	162473	Y	H	-	Q	O
4	5265	104.24914	14apr1892	15jul1996	80867	Q	H	-		Q
5	5726	1.295003	29apr1992	15aug1993	369890	Q	+	T		-
6	6875	81.804243	15jun1920	05apr2002	475185	Y	H	-	Q	-
7	7653	81.683778	08jul1920	15mar2002	471769	Y	H	-	Q	-
8	8143	34.551676	15feb1971	04sep2005	595922	N	+	T	NP	O
9	10508	2.01232	28sep1990	02oct1992	441211	Q	+	MT		O
10	11138	.049281	20feb1999	10mar1999	418771	Y	H	-	Q	-
11	12969	100.43806	28apr1905	05oct2005	448039	Y	H	-	Q	-
12	13460	74.499657	16mar1926	14sep2000	598642	Y	H	-	Q	-
13	15185	74.119096	01apr1924	15may1998	348217	Y	H	-	Q	-
14	16557	41.798767	31jul1963	18may2005	73770	N	+	MP	Q	-
15	16750	0	24feb2003	24feb2003	198162	Y	N	-	Q	-
16	18990	0	15may1994	15may1994	484700	Q	E	-		O
17	21588	70.308008	27may1924	17sep1994	315851	Q	H	-		-
18	22184	22.99247	18jun1979	15jun2002	95774	N	+	O	MP	-
19	22527	56.520191	15jun1947	22dec2003	508854	Y	H	-	Q	-
20	23694	.86516	03jun2002	15apr2003	47820	Y	H	-	Q	-
21	24236	67.022587	01jul1932	10jul1999	108038	N	+	MP	NP	-
22	24565	3.173169	03feb1997	07apr2000	78817	N	+	MT	NP	-
23	24849	83.556468	03jun1909	23dec1992	60346	Q	H	-		Q
24	25038	74.494182	22apr1925	20oct1999	154155	Y	H	-	Q	-
25	27172	69.776865	30jul1928	10may1998	170472	N	+	MT	NP	-
26	27421	37.045859	28apr1968	15may2005	256768	N	+	PM	NP	O
27	32542	61.691991	06apr1942	15dec2003	20012	N	+	MP	O	-